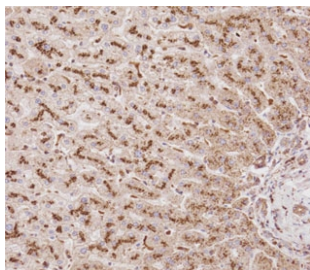


Beta Glucuronidase Antibody / Gusb (F55031)

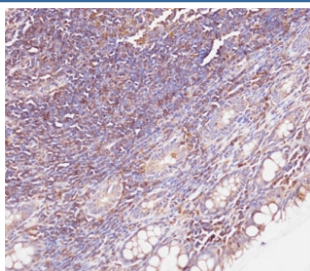
Catalog No.	Formulation	Size
F55031-0.4ML	In 1X PBS, pH 7.4, with 0.09% sodium azide	0.4 ml
F55031-0.08ML	In 1X PBS, pH 7.4, with 0.09% sodium azide	0.08 ml

Bulk quote request

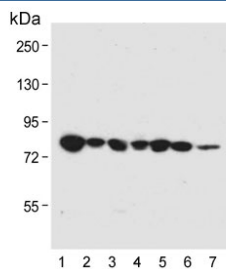
Availability	1-3 business days
Species Reactivity	Human, Mouse
Format	Purified
Clonality	Polyclonal (rabbit origin)
Isotype	Rabbit Ig
Purity	Antigen affinity purified
UniProt	P08236
Localization	Cytoplasmic
Applications	Immunohistochemistry (FFPE) : 1:50-1:100 Flow Cytometry : 1:10-1:50 (1x10e6 cells) Western Blot : 1:2000-1:4000
Limitations	This Beta Glucuronidase antibody is available for research use only.



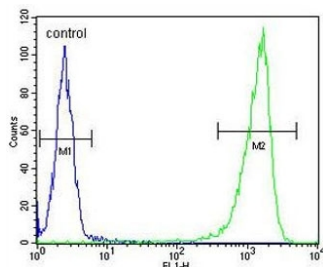
IHC testing of FFPE human liver tissue with Beta Glucuronidase antibody. HIER: steam section in pH9 EDTA buffer for 20 min and allow to cool prior to staining.



IHC testing of FFPE human colon carcinoma tissue with Beta Glucuronidase antibody. HIER: steam section in pH9 EDTA buffer for 20 min and allow to cool prior to staining.



Western blot testing of human 1) HT-29, 2) WiDr, 3) K562, 4) A2058, 5) HL60, 6) mouse liver and 7) mouse lung lysate with Beta Glucuronidase antibody. Expected molecular weight: 68-75 kDa, also seen as dimers and tetramers.



Flow cytometry testing of human WiDr cells with Beta Glucuronidase antibody; Blue=isotype control, Green= Beta Glucuronidase antibody.

Description

The GUSB gene encodes beta-glucuronidase, a lysosomal hydrolase involved in the stepwise degradation of glucuronic acid-containing glycosaminoglycans (Shipley et al., 1993). It is a tetrameric glycoprotein composed of identical subunits (Oshima et al., 1987). The GUSB gene is mutated in mucopolysaccharidosis type VII.

Application Notes

The stated application concentrations are suggested starting points. Titration of the Beta Glucuronidase antibody may be required due to differences in protocols and secondary/substrate sensitivity.

Immunogen

A portion of amino acids 335-362 from the human protein was used as the immunogen for the Beta Glucuronidase antibody.

Storage

Aliquot the Beta Glucuronidase antibody and store frozen at -20oC or colder. Avoid repeated freeze-thaw cycles.