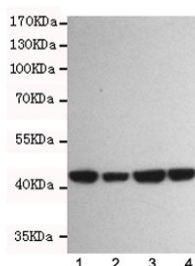


## Beta Actin Antibody Loading Control [clone 8F10-G10] (F54001)

Catalog No.	Formulation	Size
F54001-0.1ML	In PBS with 50% glycerol, 0.1mg/ml BSA and 0.02% sodium azide	0.1 ml

**Bulk quote request**

<b>Availability</b>	1-3 business days
<b>Species Reactivity</b>	Human, Mouse, Rat
<b>Format</b>	Purified
<b>Clonality</b>	Monoclonal (mouse origin)
<b>Isotype</b>	Mouse IgG2b
<b>Clone Name</b>	8F10-G10
<b>Purity</b>	Protein G affinity
<b>UniProt</b>	P60709
<b>Applications</b>	Western Blot : 1:1000
<b>Limitations</b>	This Beta Actin antibody is available for research use only.



Western blot testing of beta Actin antibody at 1:1000 dilution and 1. human Jurkat, 2. human K562, 3. rat C6 and 4. mouse NIH3T3 cell lysates. Predicted molecular weight ~45 kDa.

### Description

Actins are highly conserved proteins that are involved in various types of cell motility and are ubiquitously expressed in all eukaryotic cells.

### Application Notes

The stated application concentrations are suggested starting points. Titration of the Beta Actin antibody may be required due to differences in protocols and secondary/substrate sensitivity.

### Immunogen

A human partial recombinant protein was used as the immunogen for this Beta Actin antibody.

## **Storage**

Store the Beta Actin antibody at -20oC.