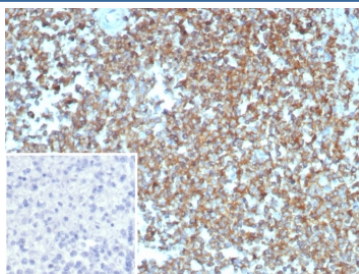


## Beta Actin Antibody / ACTB [clone ACTB/2370] (V5200)

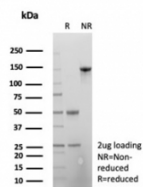
Catalog No.	Formulation	Size
V5200-100UG	0.2 mg/ml in 1X PBS with 0.1 mg/ml BSA (US sourced), 0.05% sodium azide	100 ug
V5200-20UG	0.2 mg/ml in 1X PBS with 0.1 mg/ml BSA (US sourced), 0.05% sodium azide	20 ug
V5200SAF-100UG	1 mg/ml in 1X PBS; BSA free, sodium azide free	100 ug

[Bulk quote request](#)

<b>Availability</b>	1-3 business days
<b>Species Reactivity</b>	Human
<b>Format</b>	Purified
<b>Host</b>	Mouse
<b>Clonality</b>	Monoclonal (mouse origin)
<b>Isotype</b>	Mouse IgG
<b>Clone Name</b>	ACTB/2370
<b>Purity</b>	Protein A/G affinity
<b>UniProt</b>	P60709
<b>Localization</b>	Cytoplasm
<b>Applications</b>	Immunohistochemistry (FFPE) : 1-2ug/ml for 30 min at RT
<b>Limitations</b>	This Beta Actin antibody is available for research use only.



IHC staining of FFPE human spleen tissue with Beta Actin antibody (ACTB/2370). Inset: PBS used in place of primary Ab (secondary Ab negative control). HIER: boil tissue sections in pH 9 10mM Tris with 1mM EDTA for 20 min and allow to cool before testing.



SDS-PAGE analysis of purified, BSA-free Beta Actin antibody (ACTB/2370) as confirmation of integrity and purity.

## Description

All eukaryotic cells express Actin, which often constitutes as much as 50% of total cellular protein. Actin filaments can form both stable and labile structures and are crucial components of microvilli and the contractile apparatus of muscle cells. While lower eukaryotes, such as yeast, have only one Actin gene, higher eukaryotes have several isoforms encoded by a family of genes. At least six types of Actin are present in mammalian tissues and fall into three classes. Alpha-Actin expression is limited to various types of muscle, whereas Beta-Actin and Gamma-Actin are the principle constituents of filaments in other tissues. Members of the small GTPase family regulate the organization of the Actin cytoskeleton. Rho controls the assembly of Actin stress fibers and focal adhesion. Rac regulates Actin filament accumulation at the plasma membrane. Cdc42 stimulates formation of filopodia.

## Application Notes

Optimal dilution of the Beta Actin antibody should be determined by the researcher.

## Immunogen

A recombinant partial protein sequence (within amino acids 150-350) from the human protein was used as the immunogen for the Beta Actin antibody.

## Storage

Aliquot the Beta Actin antibody and store frozen at -20oC or colder. Avoid repeated freeze-thaw cycles.