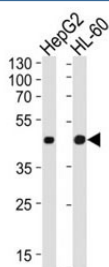


Beta Actin Antibody [clone 8H10D10] (F40187)

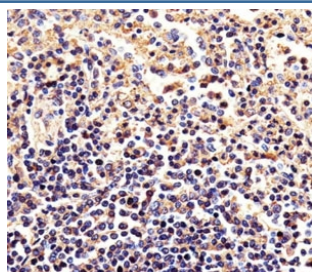
Catalog No.	Formulation	Size
F40187-0.4ML	In 1X PBS, pH 7.4, with 0.09% sodium azide	0.4 ml
F40187-0.08ML	In 1X PBS, pH 7.4, with 0.09% sodium azide	0.08 ml

[Bulk quote request](#)

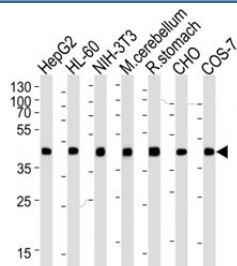
Availability	1-3 business days
Species Reactivity	Human, Mouse, Rat
Format	Purified
Host	Mouse
Clonality	Monoclonal (mouse origin)
Isotype	Mouse IgG
Clone Name	8H10D10
Purity	Purified
UniProt	P60709
Applications	Western Blot : 1:1000 IHC (Paraffin) : 1:10-1:50
Limitations	This beta-Actin antibody is available for research use only.



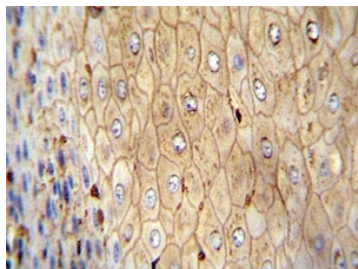
Western blot analysis of lysate from HepG2, HL-60 cell line (left to right) using beta-Actin antibody at 1:1000 for each lane.



Immunohistochemical analysis of paraffin-embedded human spleen using beta-Actin antibody at 1:25 dilution.



Western blot analysis of lysate from HepG2, HL-60, mouse NIH3T3 cell line, mouse cerebellum and rat stomach tissue lysate, CHO, COS-7 lysate (left to right) using beta-Actin antibody at 1:1000 for each lane.



Beta-Actin antibody immunohistochemistry analysis in formalin fixed and paraffin embedded human esophageal carcinoma.

Description

This gene encodes one of six different actin proteins. Actins are highly conserved proteins that are involved in cell motility, structure, and integrity. This actin is a major constituent of the contractile apparatus. It is classically referred to as being a 'nonmuscle' actin, however expression is ubiquitous, strongly in lymph tissue and weakly in heart and muscle.

Application Notes

Titration of the beta-Actin antibody may be required due to differences in protocols and secondary/substrate sensitivity.

Immunogen

ACTB recombinant protein was used to produce this monoclonal beta Actin antibody.

Storage

Aliquot the beta-Actin antibody and store frozen at -20oC or colder. Avoid repeated freeze-thaw cycles.