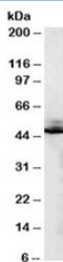


Beta-2-Adrenergic receptor Antibody (R34256)

Catalog No.	Formulation	Size
R34256-100UG	0.5 mg/ml in 1X TBS, pH7.3, with 0.5% BSA (US sourced) and 0.02% sodium azide	100 ug

[Bulk quote request](#)

Availability	1-3 business days
Species Reactivity	Human, Cow
Format	Antigen affinity purified
Host	Goat
Clonality	Polyclonal (goat origin)
Isotype	Goat Ig
Purity	Antigen affinity
Gene ID	154
Applications	Western Blot : 0.1-0.3ug/ml ELISA (peptide) LOD : 1:16000
Limitations	This beta-2-Adrenergic receptor antibody is available for research use only.



Western blot testing of human liver lysate with beta-2-Adrenergic receptor antibody at 0.2ug/ml. Predicted molecular weight ~46 kDa, but commonly observed at up to 85 kDa.

Description

Additional name(s) for this target protein: Adrenergic beta-2 receptor; ADRB2

Application Notes

Optimal dilution of the beta-2-Adrenergic receptor antibody should be determined by the researcher.

Immunogen

Amino acids HQGTVPSDNIDSQ were used as the immunogen for this beta-2-Adrenergic receptor antibody.

Storage

Aliquot and store the beta-2-Adrenergic receptor antibody at -20oC.