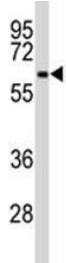


## BECN1 Antibody [clone 117CT2.5.1.1] (F53500)

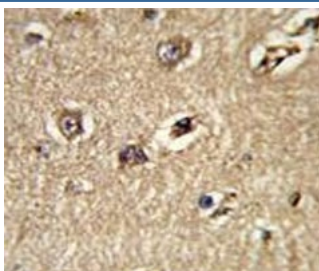
Catalog No.	Formulation	Size
F53500-0.1ML	In ascites with 0.09% sodium azide	0.1 ml

[Bulk quote request](#)

<b>Availability</b>	1-3 business days
<b>Species Reactivity</b>	Human
<b>Format</b>	Ascites
<b>Host</b>	Mouse
<b>Clonality</b>	Monoclonal (mouse origin)
<b>Isotype</b>	Mouse IgM, k
<b>Clone Name</b>	117CT2.5.1.1
<b>Purity</b>	Ascites
<b>UniProt</b>	Q14457
<b>Applications</b>	Western Blot : 1:100-1:400 IHC (Paraffin) : 1:50-1:100 Immunofluorescence : 1:10-1:50
<b>Limitations</b>	This BECN1 antibody is available for research use only.



Western blot analysis of BECN1 antibody and Jurkat lysate at 1:100 dilution.



IHC analysis of FFPE human brain with BECN1 antibody



Immunofluorescence analysis of BECN1 antibody with paraffin-embedded human brain tissue; Ab was followed by PE-conjugated goat anti-mouse IgG. PE emits orange fluorescence.

## Description

Beclin-1 participates in the regulation of autophagy and has an important role in development, tumorigenesis, and neurodegeneration.

## Application Notes

Titration of the BECN1 antibody may be required due to differences in protocols and secondary/substrate sensitivity.

## Immunogen

This BECN1 antibody was raised using purified His-tagged recombinant full length human Beclin-1.

## Storage

Aliquot the BECN1 antibody and store frozen at -20oC or colder. Avoid repeated freeze-thaw cycles.