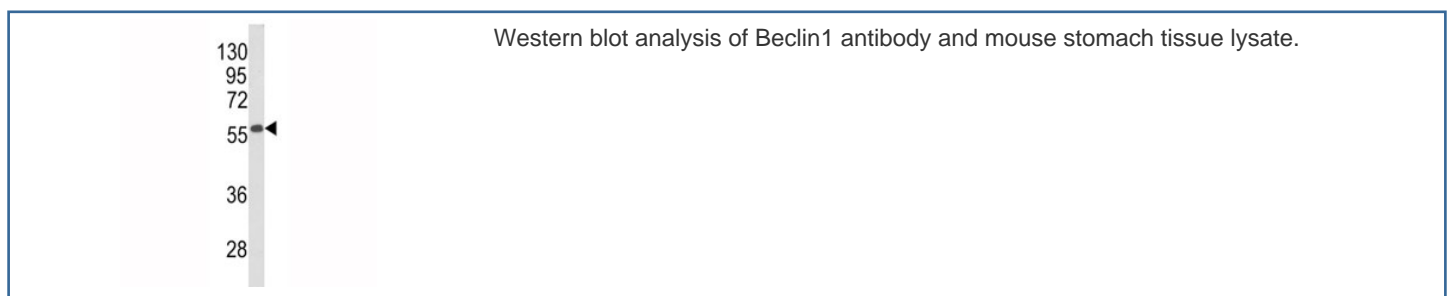


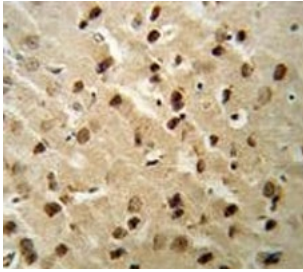
Beclin1 Antibody (F51264)

Catalog No.	Formulation	Size
F51264-0.4ML	In 1X PBS, pH 7.4, with 0.09% sodium azide	0.4 ml
F51264-0.08ML	In 1X PBS, pH 7.4, with 0.09% sodium azide	0.08 ml

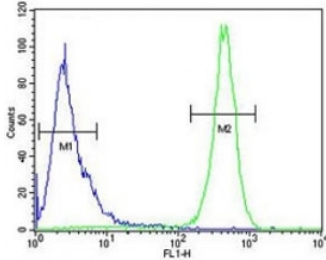
[Bulk quote request](#)

Availability	1-3 business days
Species Reactivity	Human, Mouse
Predicted Reactivity	Bovine, Chicken, Pig, Rat, Xenopus
Format	Antigen affinity purified
Host	Rabbit
Clonality	Polyclonal (rabbit origin)
Isotype	Rabbit Ig
Purity	Antigen affinity
UniProt	Q14457
Applications	Western Blot : 1:1000 IHC (Paraffin) : 1:50-1:100 Flow Cytometry : 1:10-1:50
Limitations	This Beclin1 antibody is available for research use only.





Beclin1 antibody IHC analysis in formalin fixed and paraffin embedded mouse brain tissue.



Beclin1 antibody flow cytometric analysis of HeLa cells (right histogram) compared to a negative control (left histogram). FITC-conjugated goat-anti-rabbit secondary Ab was used for the analysis.

Description

Beclin1-BH3 plays a central role in autophagy (By similarity). It may play a role in antiviral host defense. Protects against infection by a neurovirulent strain of Sindbis virus.

Application Notes

Titration of the Beclin1 antibody may be required due to differences in protocols and secondary/substrate sensitivity.

Immunogen

A portion of amino acids 95-132 from the human protein was used as the immunogen for this Beclin1 antibody.

Storage

Aliquot the Beclin1 antibody and store frozen at -20oC or colder. Avoid repeated freeze-thaw cycles.