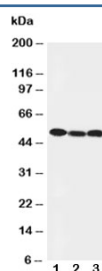


Beclin 1 Antibody (R30945)

Catalog No.	Formulation	Size
R30945	0.5mg/ml if reconstituted with 0.2ml sterile DI water	100 ug

[Bulk quote request](#)

Availability	1-3 business days
Species Reactivity	Human, Mouse, Rat
Format	Antigen affinity purified
Host	Rabbit
Clonality	Polyclonal (rabbit origin)
Isotype	Rabbit IgG
Purity	Antigen affinity
Buffer	Lyophilized from 1X PBS with 2.5% BSA and 0.025% sodium azide/thimerosal
UniProt	Q14457
Applications	Western Blot : 0.5-1ug/ml
Limitations	This Beclin 1 antibody is available for research use only.



Western blot testing of Beclin 1 antibody and Lane 1: HeLa; 2: SW620; 3: PANC cell lysate. Predicted and Observed size: 49KD

Description

Bellini-1 is a protein that in humans is encoded by the BECN1 gene, also known as BECN1, ATG6, VPS30, Coiled-coil myosin-like BCL2-interacting protein, Protein GT197, autophagy-related gene 6 (ATG6). Beclin 1 and its binding partner class III phosphoinositide 3-kinase (PI3K), also named Vps34, are required for the initiation of the formation of the autophagosome in autophagy. The gene encodes a novel 450-amino acid protein containing a coiled-coil region, within which it has limited homology to myosin-like proteins. Northern blot analysis of mouse and adult human tissues revealed widespread expression. A 2.2-kb transcript was present at highest levels in human skeletal muscle and at detectable levels in all tissues examined. In some tissues, additional 1.7- and 1.4-kb transcripts were observed, suggesting the

presence of alternatively spliced transcripts. Immunoperoxidase staining of human hippocampus and frontal cortex sections revealed Beclin 1 immunoreactivity in many neurons throughout these regions, as well as in some glial cells. It protects against infection by a neurovirulent strain of Sindbis virus that is known to overcome the protective effects of Bcl2. Liang et al. showed that Beclin 1 reduced Sindbis virus replication in mouse brain and reduced Sindbis virus-induced cell death in mouse brain.

Application Notes

Titration of the Beclin 1 antibody may be required due to differences in protocols and secondary/substrate sensitivity.

Immunogen

Amino acids 222-237 (LDQEAAQYQREYSEFK) were used as the immunogen for this Beclin 1 antibody (100% homologous in human, mouse and rat).

Storage

Store the lyophilized Beclin 1 antibody at 4oC. After reconstitution, aliquot and store at -20oC. Avoid repeated freezing and thawing.