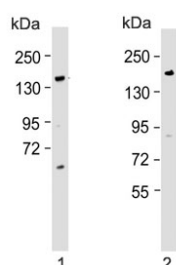


BCORL1 Antibody (F54228)

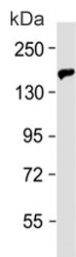
Catalog No.	Formulation	Size
F54228-0.4ML	In 1X PBS, pH 7.4, with 0.09% sodium azide	0.4 ml
F54228-0.08ML	In 1X PBS, pH 7.4, with 0.09% sodium azide	0.08 ml

Bulk quote request

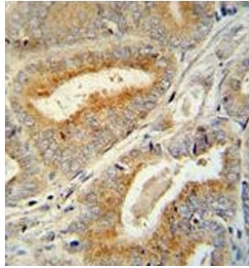
Availability	1-3 business days
Species Reactivity	Human, Rat
Format	Purified
Clonality	Polyclonal (rabbit origin)
Isotype	Rabbit Ig
Purity	Antigen affinity purified
UniProt	Q5H9F3
Gene ID	63035
Localization	Nuclear
Applications	Western Blot : 1:500-1:1000 Immunohistochemistry (FFPE) : 1:50-1:100 Flow Cytometry : 1:25 (1x10e6 cells)
Limitations	This BCORL1 antibody is available for research use only.



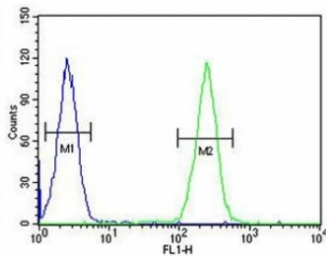
Western blot testing of human 1) HL60 and 2) Caco-2 lysate with BCORL1 antibody.
Predicted molecular weight ~182 kDa.



Western blot testing of rat skeletal muscle lysate with BCORL1 antibody. Predicted molecular weight ~182 kDa.



IHC testing of FFPE human prostate carcinoma with BCORL1 antibody. HIER: steam section in pH6 citrate buffer for 20 min and allow to cool prior to staining.



Flow cytometry testing of human HL60 cells with BCORL1 antibody; Blue=isotype control, Green= BCORL1 antibody.

Description

The protein encoded by this gene is a transcriptional corepressor that is found tethered to promoter regions by DNA-binding proteins. The encoded protein can interact with several different class II histone deacetylases to repress transcription. Two transcript variants encoding different isoforms have been found for this gene.

Application Notes

The stated application concentrations are suggested starting points. Titration of the BCORL1 antibody may be required due to differences in protocols and secondary/substrate sensitivity.

Immunogen

A portion of amino acids 69-98 from the human protein were used as the immunogen for the BCORL1 antibody.

Storage

Aliquot the BCORL1 antibody and store frozen at -20°C or colder. Avoid repeated freeze-thaw cycles.

