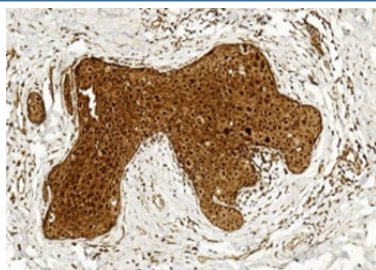


## BCOR Antibody / BCL-6 Corepressor (F54442)

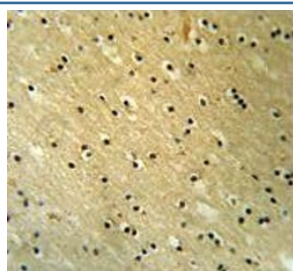
Catalog No.	Formulation	Size
F54442-0.4ML	In 1X PBS, pH 7.4, with 0.09% sodium azide	0.4 ml
F54442-0.08ML	In 1X PBS, pH 7.4, with 0.09% sodium azide	0.08 ml

[Bulk quote request](#)

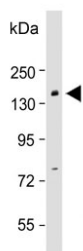
<b>Availability</b>	1-3 business days
<b>Species Reactivity</b>	Human, Mouse
<b>Format</b>	Purified
<b>Host</b>	Rabbit
<b>Clonality</b>	Polyclonal (rabbit origin)
<b>Isotype</b>	Rabbit Ig
<b>Purity</b>	Antigen affinity purified
<b>UniProt</b>	Q6W2J9
<b>Applications</b>	Western Blot : 1:500-1:2000 Flow Cytometry : 1:25 (1x10 <sup>6</sup> cells) Immunohistochemistry (FFPE) : 1:25
<b>Limitations</b>	This BCOR antibody is available for research use only.



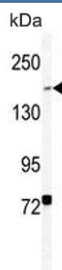
IHC testing of FFPE human breast cancer tissue with BCOR antibody. HIER: steam section in pH6 citrate buffer for 20 min and allow to cool prior to staining.



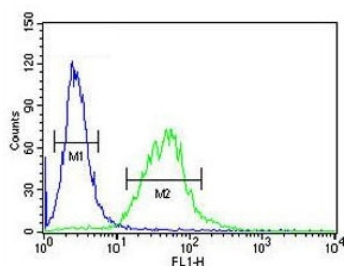
IHC testing of FFPE mouse brain tissue with BCOR antibody. HIER: steam section in pH6 citrate buffer for 20 min and allow to cool prior to staining.



Western blot testing of mouse liver lysate with BCOR antibody. Predicted molecular weight ~192 kDa.



Western blot testing of human HEK293 cell lysate with BCOR antibody. Predicted molecular weight ~192 kDa.



Flow cytometry testing of human HEK293 cells with BCOR antibody; Blue=isotype control, Green= BCOR antibody.

## Description

BCOR was identified as an interacting corepressor of BCL6, a POZ/zinc finger transcription repressor that is required for germinal center formation and may influence apoptosis. This protein selectively interacts with the POZ domain of BCL6, but not with eight other POZ proteins. Specific class I and II histone deacetylases (HDACs) have been shown to interact with this protein, which suggests a possible link between the two classes of HDACs.

## Application Notes

The stated application concentrations are suggested starting points. Titration of the BCOR antibody may be required due to differences in protocols and secondary/substrate sensitivity.

## Immunogen

A portion of amino acids 1107-1137 from the human protein was used as the immunogen for the BCOR antibody.

## Storage

Aliquot the BCOR antibody and store frozen at -20oC or colder. Avoid repeated freeze-thaw cycles.

