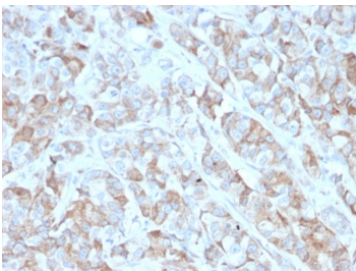


## BCMA Antibody / CD269 / TNFRSF17 [clone BCMA/2366] (V3814)

Catalog No.	Formulation	Size
V3814-100UG	0.2 mg/ml in 1X PBS with 0.1 mg/ml BSA (US sourced) and 0.05% sodium azide	100 ug
V3814-20UG	0.2 mg/ml in 1X PBS with 0.1 mg/ml BSA (US sourced) and 0.05% sodium azide	20 ug
V3814SAF-100UG	1 mg/ml in 1X PBS; BSA free, sodium azide free	100 ug

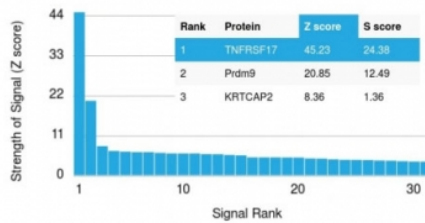
### Bulk quote request

<b>Availability</b>	1-3 business days
<b>Species Reactivity</b>	Human
<b>Format</b>	Purified
<b>Clonality</b>	Monoclonal (mouse origin)
<b>Isotype</b>	Mouse IgG2c, kappa
<b>Clone Name</b>	BCMA/2366
<b>Purity</b>	Protein G affinity chromatography
<b>UniProt</b>	Q02223
<b>Localization</b>	Cell surface
<b>Applications</b>	ELISA : order BSA/sodium azide-free format for coating Immunohistochemistry (FFPE) : 1-2ug/ml for 30 min at RT
<b>Limitations</b>	This BCMA antibody is available for research use only.



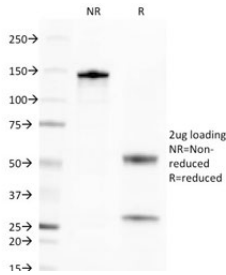
IHC testing of FFPE human gastric carcinoma with BCMA antibody (clone BCMA/2366).  
 HIER: boil tissue sections in pH6, 10mM citrate buffer, for 10-20 min followed by cooling at RT for 20 min.

#### Human Protein Microarray Specificity Validation

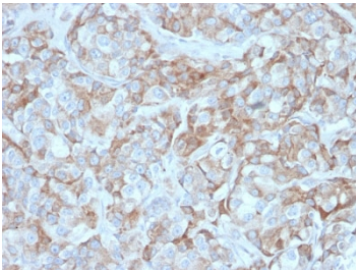


Analysis of HuProt(TM) microarray containing more than 19,000 full-length human proteins using BCMA antibody (clone BCMA/2366). These results demonstrate the foremost specificity of the BCMA/2366 mAb.

Z- and S- score: The Z-score represents the strength of a signal that an antibody (in combination with a fluorescently-tagged anti-IgG secondary Ab) produces when binding to a particular protein on the HuProt(TM) array. Z-scores are described in units of standard deviations (SD's) above the mean value of all signals generated on that array. If the targets on the HuProt(TM) are arranged in descending order of the Z-score, the S-score is the difference (also in units of SD's) between the Z-scores. The S-score therefore represents the relative target specificity of an Ab to its intended target.



SDS-PAGE analysis of purified, BSA-free BCMA antibody (clone BCMA/2366) as confirmation of integrity and purity.



IHC testing of FFPE human gastric carcinoma with BCMA antibody (clone BCMA/2366).  
HIER: boil tissue sections in pH6, 10mM citrate buffer, for 10-20 min followed by cooling at RT for 20 min.

## Description

The B cell maturation protein (BCMA) is a type I integral membrane protein that belongs to the tumor necrosis factor receptor (TNF-R) superfamily. It is expressed as a 184 amino acid peptide that is expressed only in mature B-lymphocytes and is located on the cis part of the Golgi apparatus. BCMA shares significant homology with TACI (transmembrane activator) within the cysteine-rich domain. TACI has been shown to bind CAML, which induces activation of NFAT (nuclear factor of activated T cells). Both BCMA and TACI have been shown to bind APRIL and TALL-1, which stimulate B cell proliferation in conjunction with other B-cell activators. When overexpressed, TALL-1 stimulates the development of systemic lupus erythaematosus (SLE).

## Application Notes

Titering of the BCMA antibody may be required for optimal performance.

## Immunogen

A portion of amino acids 78-184 from the human protein was used as the immunogen for the BCMA antibody.

## Storage

Store the BCMA antibody at 2-8oC (with azide) or aliquot and store at -20oC or colder (without azide).

