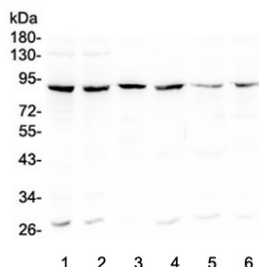


Bcl6 Antibody (RQ4637)

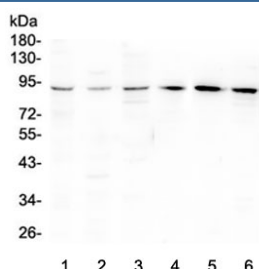
Catalog No.	Formulation	Size
RQ4637	0.5mg/ml if reconstituted with 0.2ml sterile DI water	100 ug

Bulk quote request

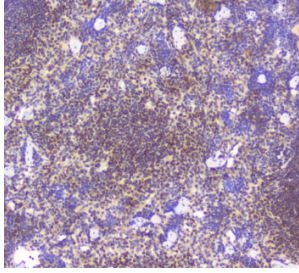
Availability	1-3 business days
Species Reactivity	Human, Mouse, Rat
Format	Antigen affinity purified
Clonality	Polyclonal (rabbit origin)
Isotype	Rabbit IgG
Purity	Antigen affinity purified
Buffer	Lyophilized from 1X PBS with 2% Trehalose and 0.025% sodium azide
UniProt	P41182
Localization	Nuclear
Applications	Western Blot : 0.5-1ug/ml IHC (FFPE) : 1-2ug/ml Flow Cytometry : 1-3ug/million cells
Limitations	This Bcl6 antibody is available for research use only.



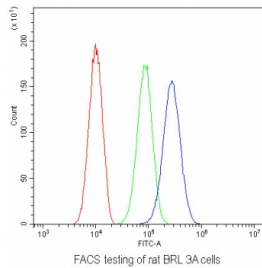
Western blot testing of human 1) Raji, 2) MCF7, 3) placenta, 4) A549, 5) Caco-2 and 6) U-2 OS lysate with Bcl6 antibody at 0.5ug/ml. Predicted molecular weight: 78~100 kDa.



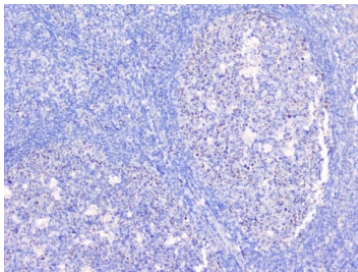
Western blot testing of rat 1) testis, 2) spleen, 3) brain and mouse 4) testis, 5) spleen and 6) brain lysate with Bcl6 antibody at 0.5ug/ml. Predicted molecular weight: 78~100 kDa.



IHC staining of FFPE mouse spleen tissue with Bcl6 antibody at 1ug/ml. HIER: boil tissue sections in pH6, 10mM citrate buffer, for 10-20 min followed by cooling at RT for 20 min.



Flow cytometry testing of rat BRL 3A cells with Bcl6 antibody at 1ug/10⁶ cells (blocked with goat sera); Red=cells alone, Green=isotype control, Blue= Bcl6 antibody.



IHC staining of FFPE human tonsil tissue with Bcl6 antibody at 1ug/ml. HIER: boil tissue sections in pH6, 10mM citrate buffer, for 10-20 min followed by cooling at RT for 20 min.

Description

B-cell lymphoma 6 protein is a protein that in human is encoded by the BCL6 gene. Like BCL2, BCL3, BCL5, BCL7A, BCL9 and BCL10, it has clinical significance in lymphoma. The protein encoded by this gene is an evolutionarily conserved zinc finger transcription factor and contains an N-terminal POZ/BTB domain. This protein acts as a sequence-specific repressor of transcription and has been shown to modulate the STAT-dependent Interleukin 4 (IL-4) responses of B cells. This protein can interact with several corepressor complexes to inhibit transcription. This gene is found to be frequently translocated and hypermutated in diffuse large B cell lymphoma (DLBCL) and contributes to the pathogenesis of DLBCL. An exon 7 skipping splice variant encodes a shorter form of the protein which lacks the first two zinc fingers of the DNA binding domain.

Application Notes

Optimal dilution of the Bcl6 antibody should be determined by the researcher.

Immunogen

Amino acids ASPADSCIQFTRHASDVLLNLNRLRSRDILTD were used as the immunogen for the Bcl6 antibody.

Storage

After reconstitution, the Bcl6 antibody can be stored for up to one month at 4°C. For long-term, aliquot and store at -20°C. Avoid repeated freezing and thawing.

