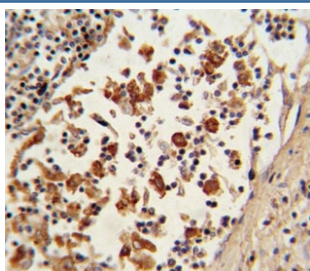


BCL6 Antibody (F50351)

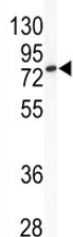
Catalog No.	Formulation	Size
F50351-0.4ML	In 1X PBS, pH 7.4, with 0.09% sodium azide	0.4 ml
F50351-0.08ML	In 1X PBS, pH 7.4, with 0.09% sodium azide	0.08 ml

[Bulk quote request](#)

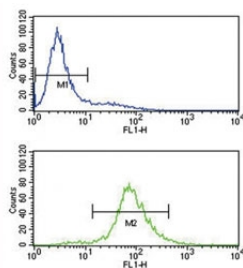
Availability	1-3 business days
Species Reactivity	Human, Mouse
Format	Antigen affinity purified
Clonality	Polyclonal (rabbit origin)
Isotype	Rabbit Ig
Purity	Antigen affinity
UniProt	P41182
Applications	Western Blot : 1:1000 IHC (Paraffin) : 1:10-1:50 Flow Cytometry : 1:10-1:50
Limitations	This BCL6 antibody is available for research use only.



IHC analysis of FFPE human lymph tissue with BCL6 antibody



Western blot analysis of BCL6 antibody and mouse cerebellum tissue lysate. Predicted molecular weight: 78~100 kDa.



BCL6 antibody flow cytometry analysis of Jurkat cells (bottom histogram) compared to a [negative control](#) (top histogram). FITC-conjugated goat-anti-rabbit secondary Ab was used for the analysis.

Description

BCL6 is a zinc finger transcription factor and contains an N-terminal POZ domain. This protein acts as a sequence-specific repressor of transcription, and has been shown to modulate the transcription of START-dependent IL-4 responses of B cells. This protein can interact with a variety of POZ-containing proteins that function as transcription corepressors.

Application Notes

Titration of the BCL6 antibody may be required due to differences in protocols and secondary/substrate sensitivity.

Immunogen

A portion of amino acids 519-547 from the human protein was used as the immunogen for this BCL6 antibody.

Storage

Aliquot the BCL6 antibody and store frozen at -20oC or colder. Avoid repeated freeze-thaw cycles.