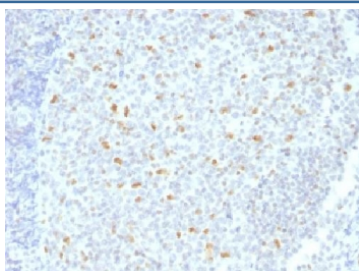


## Bcl6 Antibody [clone BCL6/1526] (V3457)

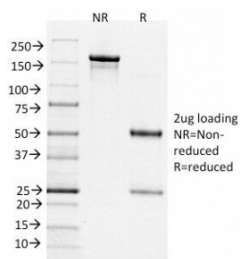
Catalog No.	Formulation	Size
V3457-100UG	0.2 mg/ml in 1X PBS with 0.1 mg/ml BSA (US sourced) and 0.05% sodium azide	100 ug
V3457-20UG	0.2 mg/ml in 1X PBS with 0.1 mg/ml BSA (US sourced) and 0.05% sodium azide	20 ug
V3457SAF-100UG	1 mg/ml in 1X PBS; BSA free, sodium azide free	100 ug

[Bulk quote request](#)

<b>Availability</b>	1-3 business days
<b>Species Reactivity</b>	Human
<b>Format</b>	Purified
<b>Clonality</b>	Monoclonal (mouse origin)
<b>Isotype</b>	Mouse IgG1, kappa
<b>Clone Name</b>	BCL6/1526
<b>Purity</b>	Protein G affinity chromatography
<b>UniProt</b>	P41182
<b>Localization</b>	Nuclear
<b>Applications</b>	Immunohistochemistry (FFPE) : 1-2ug/ml for 30 min at RT
<b>Limitations</b>	This Bcl6 antibody is available for research use only.



IHC testing of FFPE human tonsil tissue with Bcl6 antibody (clone BCL6/1526). Required HIER: boil tissue sections in 10mM Tris with 1mM EDTA, pH 9, for 10-20 min.



SDS-PAGE Analysis of Purified, BSA-Free Bcl6 Antibody (clone BCL6/1526).  
Confirmation of Integrity and Purity of the Antibody.

## Description

Antibody to Bcl-6 is helpful in a number of diagnostic settings: (1) In the differential diagnosis of small B-cell lymphoma. Follicular lymphoma will show Bcl-6 (and CD10) positivity whereas other small B-cell lymphomas are usually negative. (2) Bcl-6 is an important prognostic marker in diffuse large B-cell lymphomas (DLBCL), where CD10, Bcl-6 and MUM1/IRF4 are used to identify germinal center and activated B-cell phenotypes. (3) Bcl-6 can be valuable in distinguishing classical Hodgkin lymphoma from nodular lymphocyte predominant Hodgkin lymphoma (NLPHL). The Reed-Sternberg cells of classical Hodgkin lymphoma are bcl-6 negative whereas the large (L&H) cells of NLPHL are bcl-6 positive. In contrast, anti-Bcl-6 rarely stains mantle-cell lymphoma and MALT lymphoma.

## Application Notes

Optimal dilution of the Bcl6 antibody should be determined by the researcher.

## Immunogen

Amino acids 256-389 from the human protein were used as the immunogen for the Bcl6 antibody.

## Storage

Store the Bcl6 antibody at 2-8°C (with azide) or aliquot and store at -20°C or colder (without azide).