

Bcl2L2 Antibody / Bcl-W (R30497)

Catalog No.	Formulation	Size
R30497	0.5mg/ml if reconstituted with 0.2ml sterile DI water	100 ug

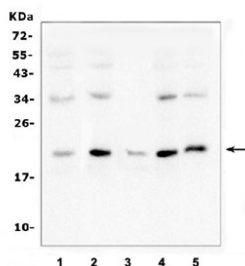
[Bulk quote request](#)

Availability	1-3 business days
Species Reactivity	Human, Mouse, Rat
Format	Antigen affinity purified
Host	Rabbit
Clonality	Polyclonal (rabbit origin)
Isotype	Rabbit IgG
Purity	Antigen affinity
Buffer	Lyophilized from 1X PBS with 2.5% BSA and 0.025% sodium azide/thimerosal
UniProt	Q92843
Localization	Cytoplasmic
Applications	Western Blot : 0.5-1ug/ml Immunohistochemistry (FFPE) : 0.5-1ug/ml
Limitations	This Bcl2L2 antibody is available for research use only.

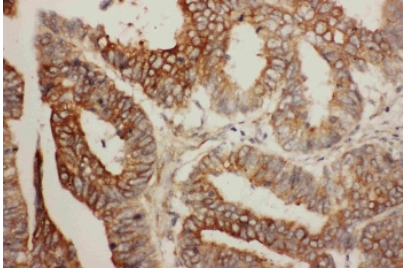


kDa
200-
116-
97-
66-
44-
31-
22-
14-
6-

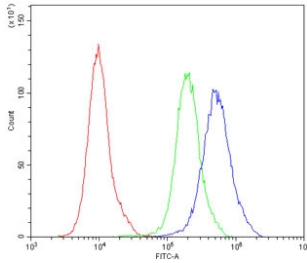
Western blot testing of human HeLa cell lysate with Bcl2L2 antibody at 0.5ug/ml.
Predicted molecular weight ~21 kDa.



Western blot testing of human 1) A549, 2) K562, 3) U937, 4) HeLa and 5) A431 cell lysate with Bcl2L2 antibody at 0.5ug/ml. Predicted molecular weight ~21 kDa.



IHC testing of FFPE human rectal cancer tissue with Bcl2L2 antibody at 1ug/ml. Required HIER: steam section in pH6 citrate buffer for 20 min and allow to cool prior to staining.



Flow cytometry testing of human PC-3 cells with Bcl2L2 antibody at 1ug/million cells (blocked with goat sera); Red=cells alone, Green=isotype control, Blue= Bcl2L2 antibody.

Description

Bcl-2-like protein 2 is a protein that in humans is encoded by the BCL2L2 gene. This gene encodes a pro-survival (anti-apoptotic) member of the bcl-2 protein family. Its is mapped to human chromosome 14q11.2-q12. The protein can be found in brain, colon and salivary gland. Acting as an anti-apoptotic/pro-survival regulator, it has played a vital role in reducing cell apoptosis under cytotoxic conditions.

Application Notes

The stated application concentrations are suggested starting points. Titration of the Bcl2L2 antibody may be required due to differences in protocols and secondary/substrate sensitivity.

Immunogen

An amino acid sequence from the middle region of human Bcl2L2 (SAQQRFTQVSDELFFQ) was used as the immunogen for this Bcl2L2 antibody (100% homologous in human, mouse and rat).

Storage

After reconstitution, the Bcl2L2 antibody can be stored for up to one month at 4°C. For long-term, aliquot and store at -20°C. Avoid repeated freezing and thawing.