

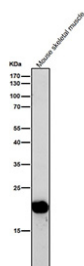
BCL2L15 Antibody / BCL2 like protein 15 [clone 31B01] (FY12010)

Catalog No.	Formulation	Size
FY12010	Rabbit IgG in phosphate buffered saline, pH 7.4, 150mM NaCl, 0.02% sodium azide and 50% glycerol, 0.4-0.5mg/ml BSA.	100 ul

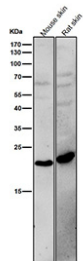
Recombinant RABBIT MONOCLONAL

[Bulk quote request](#)

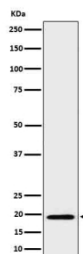
Availability	2-3 weeks
Species Reactivity	Human
Format	Liquid
Host	Rabbit
Clonality	Recombinant Rabbit Monoclonal
Isotype	Rabbit IgG
Clone Name	31B01
Purity	Affinity-chromatography
Buffer	Rabbit IgG in phosphate buffered saline, pH 7.4, 150mM NaCl, 0.02% sodium azide and 50% glycerol, 0.4-0.5mg/ml BSA.
UniProt	Q5TBC7
Applications	Western Blot : 1:500-1:2000 Immunohistochemistry : 1:50-1:200 Immunocytochemistry/Immunofluorescence : 1:50-1:200 Flow Cytometry : 1:50
Limitations	This BCL2L15 antibody is available for research use only.



All lanes use the antibody at 1:1K dilution for 1 hour at room temperature. Predicted molecular weight ~18 kDa.



All lanes use the antibody at 1:1K dilution for 1 hour at room temperature. Predicted molecular weight ~18 kDa.



Western blot analysis of BCL2L15 in His-tagged BCL2L15 cell lysate. Predicted molecular weight ~18 kDa.

Description

BCL2L15 antibody targets BCL2 like protein 15, a member of the BCL2 family of apoptosis regulators. Unlike classical anti-apoptotic proteins such as BCL2 and BCL2L1, BCL2L15 is less characterized but is thought to modulate apoptosis-related signaling. Expression has been detected in reproductive tissues, including ovary and testis, suggesting a role in germ cell survival and differentiation. Structural features align it with pro-survival BCL2 proteins, although functional studies remain ongoing.

Research using BCL2L15 antibody has begun to explore how this protein influences cell fate. BCL2 family members are critical checkpoints in the balance between cell death and survival, and alterations in their expression often contribute to tumorigenesis or developmental disorders. Preliminary studies suggest BCL2L15 may serve tissue-specific roles, particularly in regulating apoptosis during gametogenesis and early embryonic development.

Validated antibody clones enable applications such as western blot, immunohistochemistry, and immunofluorescence, providing researchers with reliable detection of this lesser-studied family member. These tools are important for mapping BCL2L15 expression patterns and clarifying its biological function within the apoptotic network.

NSJ Bioreagents provides this BCL2L15 antibody to support investigations into apoptosis regulation, reproduction biology, and cancer pathways. Alternate names include BCL2 like protein 15 antibody, BFK antibody, and BCL2 related protein F antibody.

Application Notes

Optimal dilution of the BCL2L15 antibody should be determined by the researcher.

Immunogen

A synthesized peptide derived from human BCL2L15 was used as the immunogen for the BCL2L15 antibody.

Storage

Store the BCL2L15 antibody at -20°C.

