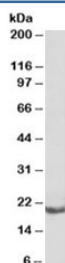


## Bcl2a1a Antibody (R35324)

Catalog No.	Formulation	Size
R35324-100UG	0.5 mg/ml in 1X TBS, pH7.3, with 0.5% BSA (US sourced) and 0.02% sodium azide	100 ug

[Bulk quote request](#)

Availability	1-3 business days
Species Reactivity	Rat
Format	Antigen affinity purified
Host	Goat
Clonality	Polyclonal (goat origin)
Isotype	Goat Ig
Purity	Antigen affinity
UniProt	Q07440
Gene ID	12044
Applications	Western Blot : 0.1-0.3ug/ml ELISA (peptide) LOD : 1:128000
Limitations	This Bcl2a1a antibody is available for research use only.



Western blot testing of rat spleen lysate with Bcl2a1a antibody at 0.1ug/ml. Predicted molecular weight: ~20kDa but may be observed at up to ~37kDa.

## Description

Additional name(s) for this target protein: Bcl-2-related protein A1

## Application Notes

Optimal dilution of the Bcl2a1a antibody should be determined by the researcher.

1. This antibody may cross react with the highly homologous Bcl2a1b and Bcl2a1d.

## Immunogen

Amino acids QKEVEKNLKPYLDD were used as the immunogen for this Bcl2a1a antibody.(1)

## Storage

Aliquot and store the Bcl2a1a antibody at -20oC.