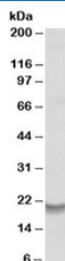


## Bcl2A1 Antibody (R34946)

Catalog No.	Formulation	Size
R34946-100UG	0.5 mg/ml in 1X TBS, pH7.3, with 0.5% BSA (US sourced) and 0.02% sodium azide	100 ug

[Bulk quote request](#)

Availability	1-3 business days
Species Reactivity	Human
Predicted Reactivity	Cow, Dog, Pig
Format	Antigen affinity purified
Host	Goat
Clonality	Polyclonal (goat origin)
Isotype	Goat Ig
Purity	Antigen affinity
UniProt	Q16548
Applications	Western Blot : 0.1-0.3ug/ml ELISA (peptide) LOD : 1:8000
Limitations	This Bcl2A1 antibody is available for research use only.



Western blot testing of human bone marrow lysate with Bcl2A1 antibody at 0.2ug/ml.  
Predicted molecular weight: ~20kDa but may be observed at up to ~37kDa.

## Description

Additional name(s) for this target protein: BCL2-related protein A1

## Application Notes

Optimal dilution of the Bcl2A1 antibody should be determined by the researcher.

## **Immunogen**

Amino acids NVVSVDART were used as the immunogen for this Bcl2A1 antibody.

## **Storage**

Aliquot and store the Bcl2A1 antibody at -20°C.