

## BCL2 Antibody (F43285)

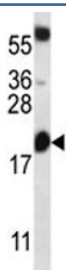
Catalog No.	Formulation	Size
F43285-0.4ML	In 1X PBS, pH 7.4, with 0.09% sodium azide	0.4 ml
F43285-0.08ML	In 1X PBS, pH 7.4, with 0.09% sodium azide	0.08 ml

[Bulk quote request](#)

<b>Availability</b>	1-3 business days
<b>Species Reactivity</b>	Human, Mouse
<b>Predicted Reactivity</b>	Bovine, Hamster, Rat
<b>Format</b>	Antigen affinity purified
<b>Host</b>	Rabbit
<b>Clonality</b>	Polyclonal (rabbit origin)
<b>Isotype</b>	Rabbit Ig
<b>Purity</b>	Antigen affinity
<b>UniProt</b>	P10415
<b>Applications</b>	Western Blot : 1:1000
<b>Limitations</b>	This BCL2 antibody is available for research use only.



BCL2 antibody western blot analysis in Jurkat lysate



BCL2 antibody western blot analysis in mouse heart tissue lysate

## Description

This gene encodes an integral outer mitochondrial membrane protein that blocks the apoptotic death of some cells such as lymphocytes. Constitutive expression of BCL2, such as in the case of translocation of BCL2 to Ig heavy chain locus, is thought to be the cause of follicular lymphoma. Two transcript variants, produced by alternate splicing, differ in their C-terminal ends. [provided by RefSeq].

## Application Notes

Titration of the BCL2 antibody may be required due to differences in protocols and secondary/substrate sensitivity.

## Immunogen

A portion of amino acids 86-114 from the human protein was used as the immunogen for this BCL2 antibody.

## Storage

Aliquot the BCL2 antibody and store frozen at -20oC or colder. Avoid repeated freeze-thaw cycles.