

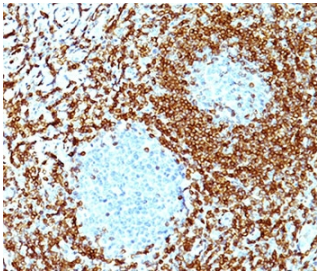
Bcl2 Antibody Cocktail [clone 100/D5 + 124] (V2010)

Catalog No.	Formulation	Size
V2010-100UG	0.2 mg/ml in 1X PBS with 0.1 mg/ml BSA (US sourced) and 0.05% sodium azide	100 ug
V2010-20UG	0.2 mg/ml in 1X PBS with 0.1 mg/ml BSA (US sourced) and 0.05% sodium azide	20 ug
V2010SAF-100UG	1 mg/ml in 1X PBS; BSA free, sodium azide free	100 ug
V2010IHC-7ML	Prediluted in 1X PBS with 0.1 mg/ml BSA (US sourced) and 0.05% sodium azide; *For IHC use only*	7 ml

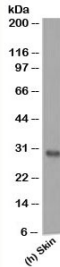
 [Citations \(2\)](#)

[Bulk quote request](#)

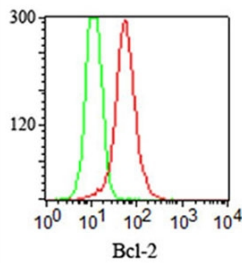
Species Reactivity	Human
Format	Purified
Host	Mouse
Clonality	Monoclonal (mouse origin)
Isotype	Mouse IgG1, kappa
Clone Name	100/D5 + 124
Purity	Protein G purification
Buffer	1X PBS, pH 7.4
Gene ID	596
Localization	Cytoplasmic, membrane
Applications	Flow Cytometry : 1-2ug/10 ⁶ cells Immunofluorescence : 1-2ug/ml Western Blot : 1-2ug/ml Immunohistochemistry (FFPE) : 1-2ug/ml for 30 min at RT
Limitations	This Bcl2 antibody cocktail is available for research use only.



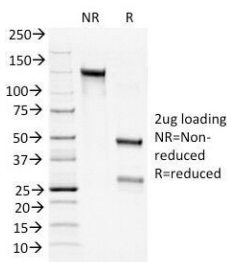
FFPE non-Hodgkin's lymphoma stained with Bcl2 antibody cocktail.



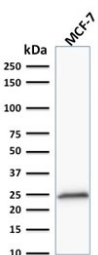
Western blot testing of human samples using Bcl2 antibody cocktail.



FACS staining (intracellular) of Jurkat cells using Bcl2 antibody cocktail (red) and isotype control (green).



SDS-PAGE Analysis of Purified, BSA-Free Bcl2 Antibody cocktail (100/D5 + 124). Confirmation of Integrity and Purity of the Antibody.



Western blot testing of human MCF7 cell lysate with Bcl-2 antibody (clone 100/D5 + 124).

Description

B-cell lymphoma 2 is an oncogene that regulates apoptosis, having both inducing and inhibiting functions. In cancer cells, Bcl2 binds pro-apoptotic proteins, preventing programmed cell death from occurring. Overexpression is seen in many cancers including lung, breast, prostate and lymphomas. In most follicular lymphomas, neoplastic germinal centers express high levels of the protein, whereas the normal or hyperplastic germinal centers are negative. Consequently, Bcl2 antibody is valuable when distinguishing between reactive and neoplastic follicular proliferation in lymph node biopsies.

Application Notes

Variations in protocols, secondaries and substrates may require the antibody cocktail to be titrated for optimal

performance.

1. FFPE staining is enhanced by boiling tissue sections in 1mM EDTA Buffer, pH 7.5-8.5, for 10-20 min followed by cooling at RT for 20 minutes.
2. The prediluted format is supplied in a dropper bottle and is optimized for use in IHC. After epitope retrieval step (if required), drip mAb solution onto the tissue section and incubate at RT for 30 min.

Immunogen

A synthetic peptide, aa 41-54 (GAAPAPGIFSSQPG) of the human protein was used as the immunogen for both antibodies in this Bcl2 antibody cocktail.

Storage

Store the Bcl2 antibody cocktail at 2-8oC (with azide) or aliquot and store at -20oC or colder (without azide).

Alternate Names

B-cell lymphoma 2, Bcl2 antibody cocktail

References (1)