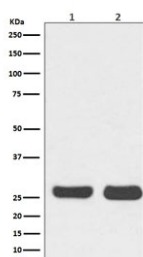


BCL2 Antibody [clone AAOH-2] (RQ5324)

Catalog No.	Formulation	Size
RQ5324	Antibody in PBS with 0.02% sodium azide, 50% glycerol and 0.4-0.5mg/ml BSA	100 ul

[Bulk quote request](#)

Availability	1-2 weeks
Species Reactivity	Human, Mouse
Format	Purified
Clonality	Rabbit Monoclonal
Isotype	Rabbit IgG
Clone Name	AAOH-2
Purity	Affinity purified
UniProt	P10415
Applications	Western Blot : 1:500-1:2000
Limitations	This BCL2 antibody is available for research use only.



Western blot testing of 1) human HeLa and 2) mouse NIH3T3 cell lysate with BCL2 antibody. Predicted molecular weight ~26 kDa.

Description

The BCL2 gene encodes an integral outer mitochondrial membrane protein that blocks the apoptotic death of some cells such as lymphocytes. Constitutive expression of BCL2, such as in the case of translocation of BCL2 to Ig heavy chain locus, is thought to be the cause of follicular lymphoma. [RefSeq]

Application Notes

Optimal dilution of the BCL2 antibody should be determined by the researcher.

Immunogen

A synthetic peptide specific to human Bcl-2 was used as the immunogen for the BCL2 antibody.

Storage

Store the BCL2 antibody at -20oC.