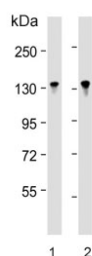


## BCL11B Antibody (F41076)

| Catalog No.   | Formulation                                | Size    |
|---------------|--|---------|
| F41076-0.4ML  | In 1X PBS, pH 7.4, with 0.09% sodium azide | 0.4 ml  |
| F41076-0.08ML | In 1X PBS, pH 7.4, with 0.09% sodium azide | 0.08 ml |

[Bulk quote request](#)

|                             |  |
|-----------------------------|--|
| <b>Availability</b>         | 1-3 business days  |
| <b>Species Reactivity</b>   | Human  |
| <b>Predicted Reactivity</b> | Mouse  |
| <b>Format</b>               | Antigen affinity purified                                |
| <b>Host</b>                 | Rabbit   |
| <b>Clonality</b>            | Polyclonal (rabbit origin)                               |
| <b>Isotype</b>              | Rabbit Ig  |
| <b>Purity</b>               | Antigen affinity   |
| <b>UniProt</b>              | Q9C0K0   |
| <b>Applications</b>         | Western Blot : 1:1000                                    |
| <b>Limitations</b>          | This BCL11B antibody is available for research use only. |



Western blot testing of human 1) Jurkat and 2) MOLT4 cell lysate with BCL11B antibody. Predicted molecular weight ~96 kDa but the modified forms of the protein can be observed at ~130 kDa.

## Description

This gene encodes a C2H2-type zinc finger protein and is closely related to BCL11A, a gene whose translocation may be associated with B-cell malignancies. The specific function of this gene has not yet been determined. Two alternatively spliced transcript variants, which encode distinct isoforms, have been reported.

## Application Notes

Titration of the BCL11B antibody may be required due to differences in protocols and secondary/substrate sensitivity.

## **Immunogen**

A portion of amino acids 307-334 from the human protein was used as the immunogen for this BCL11B antibody.

## **Storage**

Aliquot the BCL11B antibody and store frozen at -20oC or colder. Avoid repeated freeze-thaw cycles.