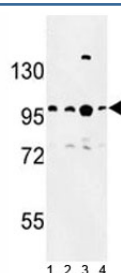


BCL11A Antibody (F51825)

Catalog No.	Formulation	Size
F51825-0.4ML	In 1X PBS, pH 7.4, with 0.09% sodium azide	0.4 ml
F51825-0.08ML	In 1X PBS, pH 7.4, with 0.09% sodium azide	0.08 ml

[Bulk quote request](#)

Availability	1-3 business days
Species Reactivity	Human
Format	Antigen affinity purified
Clonality	Polyclonal (rabbit origin)
Isotype	Rabbit Ig
Purity	Antigen affinity
UniProt	Q9H165
Applications	Western Blot : 1:1000
Limitations	This BCL11A antibody is available for research use only.



Western blot analysis of BCL11A antibody and 1) Jurkat, 2) Ramos, 3) 293 and 4) NCI-H460 lysate.

Description

BCL11A is a C2H2 type zinc-finger protein by its similarity to the mouse Bcl11a/Evi9 protein. The corresponding mouse gene is a common site of retroviral integration in myeloid leukemia, and may function as a leukemia disease gene, in part, through its interaction with BCL6.

Application Notes

Titration of the BCL11A antibody may be required due to differences in protocols and secondary/substrate sensitivity.

Immunogen

A portion of amino acids 806-835 from the human protein was used as the immunogen for this BCL11A antibody.

Storage

Aliquot the BCL11A antibody and store frozen at -20oC or colder. Avoid repeated freeze-thaw cycles.