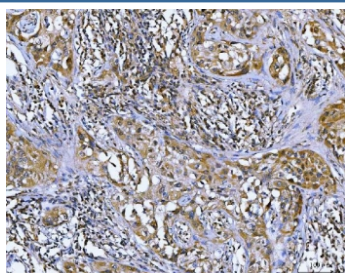


## Bcl10 Antibody (R31853)

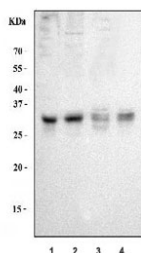
Catalog No.	Formulation	Size
R31853	0.5mg/ml if reconstituted with 0.2ml sterile DI water	100 ug

**Bulk quote request**

<b>Availability</b>	1-3 business days
<b>Species Reactivity</b>	Human
<b>Format</b>	Antigen affinity purified
<b>Clonality</b>	Polyclonal (rabbit origin)
<b>Isotype</b>	Rabbit IgG
<b>Purity</b>	Antigen affinity
<b>Buffer</b>	Lyophilized from 1X PBS with 2% Trehalose
<b>UniProt</b>	O95999
<b>Applications</b>	Western Blot : 0.5-1ug/ml Immunohistochemistry (FFPE) : 2-5ug/ml
<b>Limitations</b>	This Bcl10 antibody is available for research use only.



IHC staining of FFPE human lymph node carcinoma tissue with Bcl10 antibody. HIER: boil tissue sections in pH8 EDTA for 20 min and allow to cool before testing.



Western blot testing of human 1) Raji, 2) Jurkat, 3) MCF7 ad 4) HeLa cell lysate with Bcl10 antibody. Routinely observed molecular weight: 26~33 kDa.

## Description

BCL10, B-cell CLL/lymphoma 10, gene was identified by its translocation in a case of mucosa-associated lymphoid tissue (MALT) lymphoma. The BCL10 gene is mapped to chromosome 1p22. The protein encoded by this gene contains a caspase recruitment domain (CARD), and has been shown to induce apoptosis and to activate NF-kappaB. This protein is reported to interact with other CARD domain containing proteins including CARD9, 10, 11 and 14, which are thought to function as upstream regulators in NF-kappaB signaling. And this protein is found to form a complex with MALT1, a protein encoded by another gene known to be translocated in MALT lymphoma. MALT1 and this protein are thought to synergize in the activation of NF-kappaB, and the deregulation of either of them may contribute to the same pathogenetic process that leads to the malignancy.

## Application Notes

Optimal dilution of the Bcl10 antibody should be determined by the researcher.

## Immunogen

Amino acids 1-233 of human Bcl10 were used as the immunogen for the Bcl10 antibody.

## Storage

After reconstitution, the Bcl10 antibody can be stored for up to one month at 4oC. For long-term, aliquot and store at -20oC. Avoid repeated freezing and thawing.