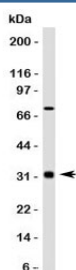


## Bcl10 Antibody [clone MUBC10] (V7088)

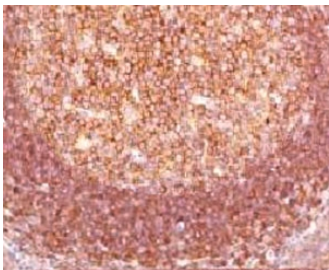
Catalog No.	Formulation	Size
V7088-100UG	0.2 mg/ml in 1X PBS with 0.1 mg/ml BSA (US sourced) and 0.05% sodium azide	100 ug
V7088-20UG	0.2 mg/ml in 1X PBS with 0.1 mg/ml BSA (US sourced) and 0.05% sodium azide	20 ug
V7088SAF-100UG	1 mg/ml in 1X PBS; BSA free, sodium azide free	100 ug
V7088IHC-7ML	Prediluted in 1X PBS with 0.1 mg/ml BSA (US sourced) and 0.05% sodium azide; *For IHC use only*	7 ml

[Bulk quote request](#)

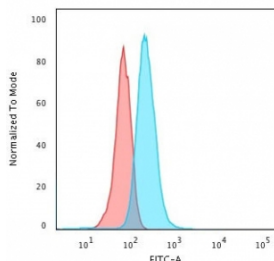
<b>Species Reactivity</b>	Human
<b>Format</b>	Purified
<b>Clonality</b>	Monoclonal (mouse origin)
<b>Isotype</b>	Mouse IgG1, kappa
<b>Clone Name</b>	MUBC10
<b>Purity</b>	Protein G affinity chromatography
<b>Gene ID</b>	8915
<b>Localization</b>	Nuclear and cytoplasmic
<b>Applications</b>	Flow Cytometry : 1-2ug/10 <sup>6</sup> cells Western Blot : 1-2ug/ml Immunohistochemistry (FFPE) : 1-2ug/ml for 30 min at RT Prediluted IHC Only Format : incubate for 30 min at RT (1)
<b>Limitations</b>	This Bcl10 antibody is available for research use only.



Western blot testing of Bcl10 antibody (clone MUBC10) and HepG2 lysate. Observed molecular weight: 26~33 kDa.



IHC staining of human tonsil with Bcl10 antibody (clone MUBC10). Required HIER: boil tissue sections in pH 9 10mM Tris with 1mM EDTA for 10-20 min.



Flow cytometry testing of PFA-fixed human K562 cells with Bcl10 antibody (clone MUBC10); Red=isotype control, Blue= Bcl10 antibody.

## Description

Bcl10, with an N-terminal caspase recruitment domain (CARD), is found in a number of apoptotic regulatory molecules.

## Application Notes

## Immunogen

Human recombinant protein was used as the immunogen for this Bcl10 antibody.

## Storage

Store the Bcl10 antibody at 2-8oC (with azide) or aliquot and store at -20oC or colder (without azide).