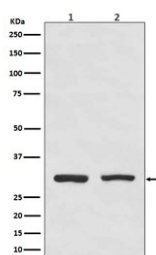


Bcl10 Antibody [clone GDB-2] (RQ4824)

Catalog No.	Formulation	Size
RQ4824	Antibody in PBS with 0.02% sodium azide, 50% glycerol and 0.4-0.5mg/ml BSA	100 ul

[Bulk quote request](#)

Availability	1-2 weeks
Species Reactivity	Human
Format	Purified
Clonality	Rabbit Monoclonal
Isotype	Rabbit IgG
Clone Name	GDB-2
Purity	Affinity purified
UniProt	O95999
Applications	Western Blot : 1:1000-1:2000
Limitations	This Bcl10 antibody is available for research use only.



Western blot testing of human 1) HeLa and 2) Raji cell lysate with Bcl10 antibody.
Expected molecular weight: 26-33 kDa.

Description

Bcl10 contains a caspase recruitment domain (CARD), and has been shown to induce apoptosis and to activate NF-kappaB. It is reported to interact with other CARD domain containing proteins including CARD9, 10, 11 and 14, which are thought to function as upstream regulators in NF-kappaB signaling. Bcl10 is found to form a complex with MALT1, a protein encoded by another gene known to be translocated in MALT lymphoma. MALT1 and Bcl10 are thought to synergize in the activation of NF-kappaB, and the deregulation of either of them may contribute to the same pathogenetic process that leads to the malignancy. [RefSeq]

Application Notes

Optimal dilution of the Bcl10 antibody should be determined by the researcher.

Immunogen

A synthetic peptide specific to human Bcl10 was used as the immunogen for the Bcl10 antibody.

Storage

Store the Bcl10 antibody at -20oC.