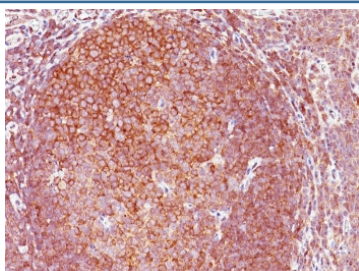


Bcl10 Antibody [clone 151] (V8190)

Catalog No.	Formulation	Size
V8190-100UG	0.2 mg/ml in 1X PBS with 0.1 mg/ml BSA (US sourced) and 0.05% sodium azide	100 ug
V8190-20UG	0.2 mg/ml in 1X PBS with 0.1 mg/ml BSA (US sourced) and 0.05% sodium azide	20 ug
V8190SAF-100UG	1 mg/ml in 1X PBS; BSA free, sodium azide free	100 ug

Bulk quote request

Availability	1-3 business days
Species Reactivity	Human
Format	Purified
Clonality	Monoclonal (mouse origin)
Isotype	Mouse IgG1, kappa
Clone Name	151
Purity	Protein G affinity chromatography
UniProt	O95999
Localization	Nuclear, cytoplasmic
Applications	Immunohistochemistry (FFPE) : 1-2ug/ml
Limitations	This Bcl10 antibody is available for research use only.



IHC staining of FFPE human tonsil with Bcl10 antibody (clone 151). HIER: boil tissue sections in pH 9 10mM Tris with 1mM EDTA for 20 min and allow to cool before testing.

Description

BCL10, with an N-terminal caspase recruitment domain (CARD), is found in a number of apoptotic regulatory molecules. It was identified through its direct involvement in t(1;14) of mucosa-associated lymphoid tissue (MALT) lymphoma.

Expression of BCL10 was shown to induce NF14) translocation, while 55% of MALT lymphomas lacking this translocation exhibited the same labeling pattern, although at a much lower level.

Application Notes

Optimal dilution of the Bcl10 antibody should be determined by the researcher.

Immunogen

A recombinant human partial protein (amino acids 122-168) was used as the immunogen for this Bcl10 antibody.

Storage

Store the Bcl10 antibody at 2-8oC (with azide) or aliquot and store at -20oC or colder (without azide).