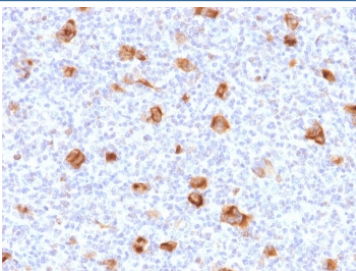


## Bcl-X Antibody [clone SPM519] (V8301)

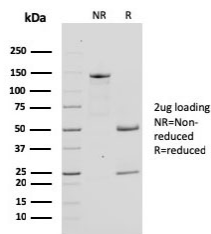
Catalog No.	Formulation	Size
V8301-100UG	0.2 mg/ml in 1X PBS with 0.1 mg/ml BSA (US sourced) and 0.05% sodium azide	100 ug
V8301-20UG	0.2 mg/ml in 1X PBS with 0.1 mg/ml BSA (US sourced) and 0.05% sodium azide	20 ug
V8301SAF-100UG	1 mg/ml in 1X PBS; BSA free, sodium azide free	100 ug

### Bulk quote request

<b>Availability</b>	1-3 business days
<b>Species Reactivity</b>	Human
<b>Format</b>	Purified
<b>Host</b>	Mouse
<b>Clonality</b>	Monoclonal (mouse origin)
<b>Isotype</b>	Mouse IgG
<b>Clone Name</b>	SPM519
<b>Purity</b>	Protein G affinity chromatography
<b>UniProt</b>	Q07817
<b>Applications</b>	Immunohistochemistry (FFPE) : 1-2ug/ml
<b>Limitations</b>	This Bcl-X antibody is available for research use only.



IHC staining of FFPE human Hodgkin's lymphoma with Bcl-X antibody (clone SPM519).  
HIER: boil tissue sections in pH 9 10mM Tris with 1mM EDTA for 20 min and allow to cool before testing.



SDS-PAGE analysis of purified, BSA-free Bcl-X antibody (clone SPM519) as confirmation of integrity and purity.

## Description

Recognizes a protein of 27kDa, identified as the Bcl-X protein. This MAb shows no cross-reaction with Bcl-2 or Bax protein. Bcl-X has two isoforms, Bcl-XL (long), a 241 amino acid protein which suppresses cell death. And Bcl-XS (short), a 178 amino acid protein lacking a 63 amino acid domain which functions as a dominant inhibitor of Bcl-2.

Learn more about Bcl-XL function, apoptosis regulation, mitochondrial survival signaling, and BCL2L1 biology on our [Bcl-XL Antibody / Anti-Apoptotic Protein Antibody](#) page.

## Application Notes

Optimal dilution of the Bcl-X antibody should be determined by the researcher.

## Immunogen

A recombinant human partial protein (amino acids 1-135) was used as the immunogen for this Bcl-X antibody.

## Storage

Store the Bcl-X antibody at 2-8oC (with azide) or aliquot and store at -20oC or colder (without azide).