

## Bcl-X Antibody [clone SPM337] (V2836)

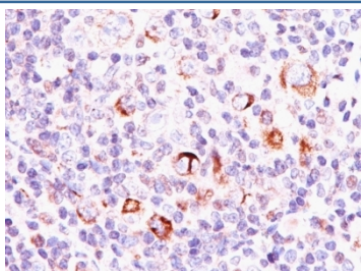
Catalog No.	Formulation	Size
V2836-100UG	0.2 mg/ml in 1X PBS with 0.1 mg/ml BSA (US sourced) and 0.05% sodium azide	100 ug
V2836-20UG	0.2 mg/ml in 1X PBS with 0.1 mg/ml BSA (US sourced) and 0.05% sodium azide	20 ug
V2836SAF-100UG	1 mg/ml in 1X PBS; BSA free, sodium azide free	100 ug
V2836IHC-7ML	Prediluted in 1X PBS with 0.1 mg/ml BSA (US sourced) and 0.05% sodium azide; *For IHC use only*	7 ml



Citations (1)

[Bulk quote request](#)

Availability	1-3 business days
Species Reactivity	Human
Format	Purified
Clonality	Monoclonal (mouse origin)
Isotype	Mouse IgG2a, kappa
Clone Name	SPM337
Purity	Protein G affinity chromatography
UniProt	Q07817
Localization	Cytoplasmic, cell and nuclear membrane
Applications	Immunohistochemistry (FFPE) : 1-2ug/ml for 30 min at RT
Limitations	This Bcl-X antibody is available for research use only.



IHC: Formalin-fixed, paraffin-embedded human Hodgkin's lymphoma stained with Bcl-X antibody (SPM337).

## Description

Recognizes a protein of 27kDa, identified as the Bcl-X protein. This mAb shows no cross-reaction with Bcl-2 or Bax protein. Bcl-X has two isoforms, Bcl-XL (long), a 241 amino acid protein which suppresses cell death. And Bcl-XS (short), a 178 amino acid protein lacking a 63 amino acid domain which functions as a dominant inhibitor of Bcl-2. This mAb reacts with both Bcl-XS and Bcl-XL proteins.

## Application Notes

Optimal dilution of the Bcl-X antibody should be determined by the researcher.

1. Staining of formalin-fixed tissues requires boiling tissue sections in 10mM Tris with 1mM EDTA, pH 9 or 10mM Citrate buffer, pH 6.0, for 10-20 min followed by cooling at RT for 20 min.
2. The prediluted format is supplied in a dropper bottle and is optimized for use in IHC. After epitope retrieval step (if required), drip mAb solution onto the tissue section and incubate at RT for 30 min.

## Immunogen

A synthetic peptide, aa 3-14 (c-QSNRELVVDFLS) from the human protein was used as the immunogen for the Bcl-X antibody.

## Storage

Store the Bcl-X antibody at 2-8°C (with azide) or aliquot and store at -20°C or colder (without azide).