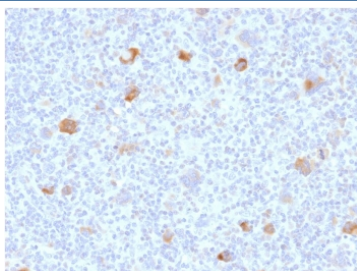


Bcl-X Antibody [clone BCL2L1/2406] (V8062)

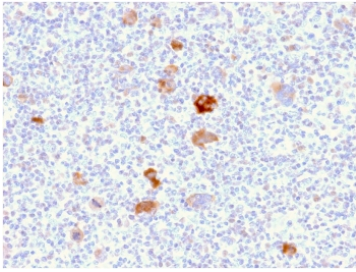
Catalog No.	Formulation	Size
V8062-100UG	0.2 mg/ml in 1X PBS with 0.1 mg/ml BSA (US sourced) and 0.05% sodium azide	100 ug
V8062-20UG	0.2 mg/ml in 1X PBS with 0.1 mg/ml BSA (US sourced) and 0.05% sodium azide	20 ug
V8062SAF-100UG	1 mg/ml in 1X PBS; BSA free, sodium azide free	100 ug

Bulk quote request

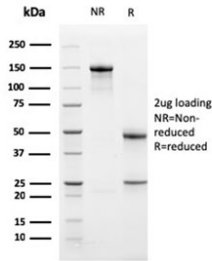
Availability	1-3 business days
Species Reactivity	Human
Format	Purified
Host	Mouse
Clonality	Monoclonal (mouse origin)
Isotype	Mouse IgG
Clone Name	BCL2L1/2406
Purity	Protein G affinity chromatography
UniProt	Q07817
Localization	Cytoplasmic and cell/nuclear membrane
Applications	Immunohistochemistry : 1-2ug/ml
Limitations	This Bcl-X antibody is available for research use only.



IHC staining of FFPE human Hodgkin's lymphoma with Bcl-X antibody (clone BCL2L1/2406). HIER: boil tissue sections in pH 9 10mM Tris with 1mM EDTA for 20 min and allow to cool before testing.



IHC staining of FFPE human Hodgkin's lymphoma with Bcl-X antibody (clone BCL2L1/2406). HIER: boil tissue sections in pH 9 10mM Tris with 1mM EDTA for 20 min and allow to cool before testing.



SDS-PAGE analysis of purified, BSA-free Bcl-X antibody (clone BCL2L1/2406) as confirmation of integrity and purity.

Description

Recognizes a protein of 27kDa, identified as the Bcl-X protein. This MAb shows no cross-reaction with Bcl-2 or Bax protein. Bcl-X has two isoforms, Bcl-XL (long), a 241-amino acid protein which suppresses cell death. And Bcl-XS (short), a 178-amino acid protein lacking a 63-amino acid domain which functions as a dominant inhibitor of Bcl-2.

Learn more about Bcl-XL function, apoptosis regulation, mitochondrial survival signaling, and BCL2L1 biology on our [Bcl-XL Antibody / Anti-Apoptotic Protein Antibody](#) page.

Application Notes

Optimal dilution of the Bcl-X antibody should be determined by the researcher.

Immunogen

A recombinant human partial protein (amino acids 1-135) was used as the immunogen for this Bcl-X antibody.

Storage

Store the Bcl-X antibody at 2-8oC (with azide) or aliquot and store at -20oC or colder (without azide).