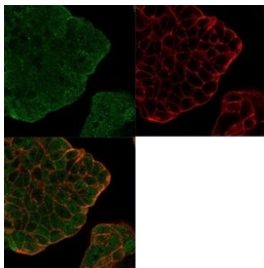


Bcl-W Antibody / Bcl2L2 [clone PCRP-BCL2L2-1A4] (V8951)

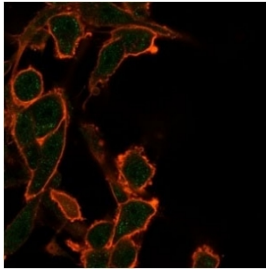
Catalog No.	Formulation	Size
V8951-100UG	0.2 mg/ml in 1X PBS with 0.1 mg/ml BSA (US sourced), 0.05% sodium azide	100 ug
V8951-20UG	0.2 mg/ml in 1X PBS with 0.1 mg/ml BSA (US sourced), 0.05% sodium azide	20 ug
V8951SAF-100UG	1 mg/ml in 1X PBS; BSA free, sodium azide free	100 ug

Bulk quote request

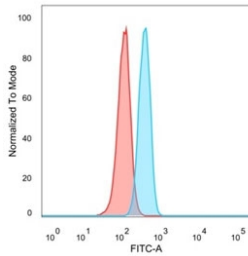
Availability	1-3 business days
Species Reactivity	Human
Format	Purified
Host	Mouse
Clonality	Monoclonal (mouse origin)
Isotype	Mouse IgG2b
Clone Name	PCRP-BCL2L2-1A4
Purity	Protein A/G affinity
UniProt	Q92843
Localization	Cytoplasm
Applications	Flow Cytometry : 1-2ug/million cells Immunofluorescence : 1-2ug/ml
Limitations	This Bcl-W antibody is available for research use only.



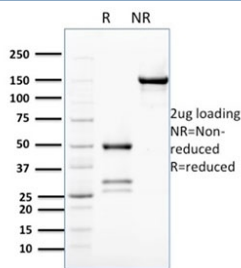
Immunofluorescent staining of PFA-fixed human MCF-7 cells using Bcl-W antibody (green, clone PCRP-BCL2L2-1A4) and phalloidin (red).



Immunofluorescent staining of PFA-fixed human U-87 cells using Bcl-W antibody (green, clone PCRP-BCL2L2-1A4) and phalloidin (red).

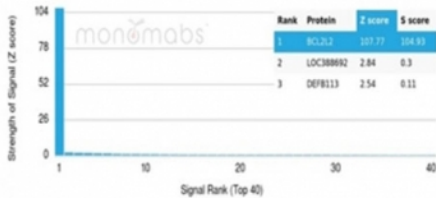


FACS staining of PFA-fixed human Raji cells with Bcl-W antibody (blue, clone PCRP-BCL2L2-1A4) and isotype control (red).



SDS-PAGE analysis of purified, BSA-free Bcl-W antibody (clone PCRP-BCL2L2-1A4) as confirmation of integrity and purity.

Human Protein Microarray Specificity Validation



Analysis of HuProt(TM) microarray containing more than 19,000 full-length human proteins using Bcl-W antibody (clone PCRP-BCL2L2-1A4). These results demonstrate the foremost specificity of the PCRP-BCL2L2-1A4 mAb. Z- and S- score: The Z-score represents the strength of a signal that an antibody (in combination with a fluorescently-tagged anti-IgG secondary Ab) produces when binding to a particular protein on the HuProt(TM) array. Z-scores are described in units of standard deviations (SD's) above the mean value of all signals generated on that array. If the targets on the HuProt(TM) are arranged in descending order of the Z-score, the S-score is the difference (also in units of SD's) between the Z-scores. The S-score therefore represents the relative target specificity of an Ab to its intended target.

Description

This gene encodes a member of the BCL-2 protein family. The proteins of this family form hetero- or homodimers and act as anti- and pro-apoptotic regulators. Expression of this gene in cells has been shown to contribute to reduced cell apoptosis under cytotoxic conditions. Studies of the related gene in mice indicated a role in the survival of NGF- and BDNF-dependent neurons. Mutation and knockout studies of the mouse gene demonstrated an essential role in adult spermatogenesis. Alternative splicing results in multiple transcript variants. Read-through transcription also exists between this gene and the neighboring downstream PABPN1 (poly(A) binding protein, nuclear 1) gene.

Application Notes

Optimal dilution of the Bcl-W antibody should be determined by the researcher.

Immunogen

Recombinant human full-length BCL2L2/Bcl-W protein was used as the immunogen for the Bcl-W antibody.

Storage

Aliquot the Bcl-W antibody and store frozen at -20oC or colder. Avoid repeated freeze-thaw cycles.