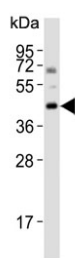


Bcl-G Antibody (BH3 Domain) (F54664)

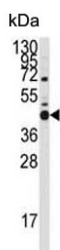
Catalog No.	Formulation	Size
F54664-0.4ML	In 1X PBS, pH 7.4, with 0.09% sodium azide	0.4 ml
F54664-0.08ML	In 1X PBS, pH 7.4, with 0.09% sodium azide	0.08 ml

[Bulk quote request](#)

Availability	1-3 business days
Species Reactivity	Human
Format	Purified
Clonality	Polyclonal (rabbit origin)
Isotype	Rabbit Ig
Purity	Purified
UniProt	Q9BZR8
Applications	Western Blot : 1:500-1:2000 Immunohistochemistry (FFPE) : 1:25
Limitations	This Bcl-G antibody is available for research use only.

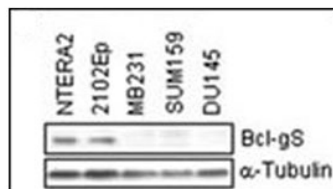


Western blot testing of human lung lysate with Bcl-G antibody. Predicted molecular weight ~37 kDa.

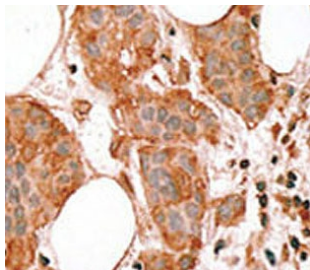


Western blot testing of human K562 cell lysate with Bcl-G antibody. Predicted molecular weight ~37 kDa.

Western blot testing of cell lysates with Bcl-G antibody.



IHC testing of FFPE human breast cancer tissue with Bcl-G antibody. HIER: steam section in pH6 citrate buffer for 20 min and allow to cool prior to staining.



Description

Bcl-G belongs to the BCL2 protein family. BCL2 family members form hetero- or homodimers and act as anti- or pro-apoptotic regulators that are involved in a wide variety of cellular activities. Overexpression of Bcl-G has been shown to induce apoptosis in cells.

Application Notes

The stated application concentrations are suggested starting points. Titration of the Bcl-G antibody may be required due to differences in protocols and secondary/substrate sensitivity.

Immunogen

An amino acid sequence from the BH3 domain of the human protein was used as the immunogen for the Bcl-G antibody.

Storage

Aliquot the Bcl-G antibody and store frozen at -20oC or colder. Avoid repeated freeze-thaw cycles.