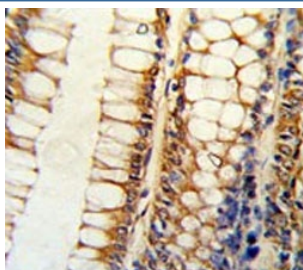


Bcl-2-like protein 11 Antibody / BCL2L11 / Bim (F54977)

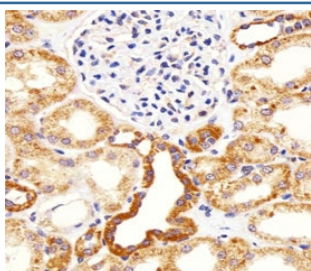
Catalog No.	Formulation	Size
F54977-0.4ML	In 1X PBS, pH 7.4, with 0.09% sodium azide	0.4 ml
F54977-0.08ML	In 1X PBS, pH 7.4, with 0.09% sodium azide	0.08 ml

Bulk quote request

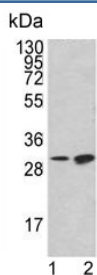
Availability	1-3 business days
Species Reactivity	Human
Format	Purified
Clonality	Polyclonal (rabbit origin)
Isotype	Rabbit Ig
Purity	Antigen affinity purified
UniProt	O43521
Localization	Cytoplasmic
Applications	Immunohistochemistry (FFPE) : 1:25 Flow Cytometry : 1:50-1:100 (1x10e6 cells) Western Blot : 1:500-1:1000
Limitations	This Bcl-2-like protein 11 antibody is available for research use only.



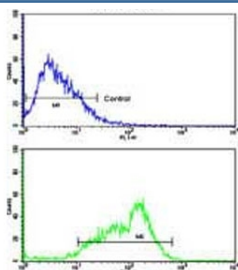
IHC testing of FFPE human colon carcinoma tissue with Bcl-2-like protein 11 antibody. HIER: steam section in pH6 citrate buffer for 20 min and allow to cool prior to staining.



IHC testing of FFPE human kidney tissue with Bcl-2-like protein 11 antibody. HIER: steam section in pH6 citrate buffer for 20 min and allow to cool prior to staining.



Western blot testing of human 1) K562 and 2) HL60 cell lysate with Bcl-2-like protein 11 antibody. Predicted molecular weight ~22 kDa.



Flow cytometry testing of human WiDr cells with Bcl-2-like protein 11 antibody; Blue=isotype control, Green= Bcl-2-like protein 11 antibody.

Description

Bcl-2-like protein 11, also called BCL2L11 and Bim, belongs to the BCL-2 protein family. BCL-2 family members form hetero- or homodimers and act as anti- or pro-apoptotic regulators that are involved in a wide variety of cellular activities. This protein contains a Bcl-2 homology domain 3 (BH3). It has been shown to interact with other members of the BCL-2 protein family, including BCL2, BCL2L1/BCL-X(L), and MCL1, and to act as an apoptotic activator.

Application Notes

The stated application concentrations are suggested starting points. Titration of the Bcl-2-like protein 11 antibody may be required due to differences in protocols and secondary/substrate sensitivity.

Immunogen

A portion of amino acids 134-160 from the human protein was used as the immunogen for the Bcl-2-like protein 11 antibody.

Storage

Aliquot the Bcl-2-like protein 11 antibody and store frozen at -20°C or colder. Avoid repeated freeze-thaw cycles.