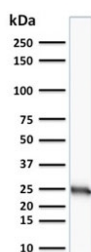


## Bcl-2 Antibody [clone SPM117] (V8837)

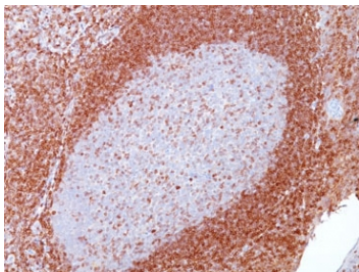
Catalog No.	Formulation	Size
V8837-100UG	0.2 mg/ml in 1X PBS with 0.1 mg/ml BSA (US sourced), 0.05% sodium azide	100 ug
V8837-20UG	0.2 mg/ml in 1X PBS with 0.1 mg/ml BSA (US sourced), 0.05% sodium azide	20 ug
V8837SAF-100UG	1 mg/ml in 1X PBS; BSA free, sodium azide free	100 ug

[Bulk quote request](#)

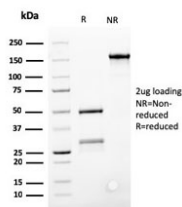
<b>Availability</b>	1-3 business days
<b>Species Reactivity</b>	Human
<b>Format</b>	Purified
<b>Clonality</b>	Monoclonal (mouse origin)
<b>Isotype</b>	Mouse IgG1, kappa
<b>Clone Name</b>	SPM117
<b>Purity</b>	Protein A/G affinity
<b>UniProt</b>	P10415
<b>Localization</b>	Cytoplasm, nuclear membrane
<b>Applications</b>	Western Blot : 1-2ug/ml Immunohistochemistry (FFPE) : 1-2ug/ml
<b>Limitations</b>	This Bcl-2 antibody is available for research use only.



Western blot analysis of human MCF-7 cell lysate using Bcl-2 antibody (clone SPM117).



IHC staining of FFPE human tonsil tissue with Bcl-2 antibody (clone SPM117). HIER: boil tissue sections in pH 9 10mM Tris with 1mM EDTA for 20 min and allow to cool before testing.



SDS-PAGE analysis of purified, BSA-free Bcl-2 antibody (SPM117) as confirmation of integrity and purity.

## Description

This antibody recognizes a protein of 25-26kDa, identified as the bcl-2 lpha oncoprotein. It shows no cross-reaction with Bcl-x or Bax protein. Expression of bcl-2 lpha oncoprotein inhibits the programmed cell death (apoptosis). In most follicular lymphomas, neoplastic germinal centers express high levels of bcl-2 lpha protein, whereas the normal or hyperplastic germinal centers are negative. Consequently, this antibody is valuable when distinguishing between reactive and neoplastic follicular proliferation in lymph node biopsies. It may also be used in distinguishing between those follicular lymphomas that express bcl-2 protein and the small number in which the neoplastic cells are bcl-2 negative.

## Application Notes

Optimal dilution of the Bcl-2 antibody should be determined by the researcher.

## Immunogen

Amino acids 41-54 (GAAPAPGIFSSQPG) from the human protein were used as the immunogen for the Bcl-2 antibody.

## Storage

Aliquot the Bcl-2 antibody and store frozen at -20oC or colder. Avoid repeated freeze-thaw cycles.