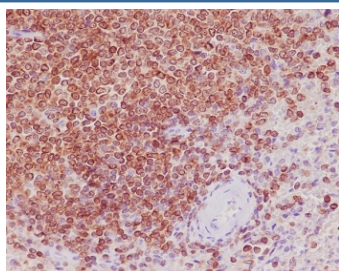


Bcl-2 Antibody [clone HF-2] (RQ5323)

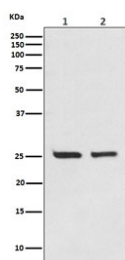
Catalog No.	Formulation	Size
RQ5323	Antibody in PBS with 0.02% sodium azide, 50% glycerol and 0.4-0.5mg/ml BSA	100 ul

[Bulk quote request](#)

Availability	1-2 weeks
Species Reactivity	Human
Format	Purified
Clonality	Rabbit Monoclonal
Isotype	Rabbit IgG
Clone Name	HF-2
Purity	Affinity purified
UniProt	P10415
Applications	Western Blot : 1:500-1:2000 Immunohistochemistry (FFPE) : 1:50-1:100
Limitations	This Bcl-2 antibody is available for research use only.



IHC staining of FFPE human spleen tissue with Bcl-2 antibody. HIER: boil tissue sections in pH6, 10mM citrate buffer, for 10-20 min and allow to cool before testing.



Western blot testing of human 1) Jurkat and 2) MCF-7 cell lysate with Bcl-2 antibody. Predicted molecular weight ~26 kDa.

Description

The BCL2 gene encodes an integral outer mitochondrial membrane protein that blocks the apoptotic death of some cells such as lymphocytes. Constitutive expression of BCL2, such as in the case of translocation of BCL2 to Ig heavy chain locus, is thought to be the cause of follicular lymphoma. [RefSeq]

Application Notes

Optimal dilution of the Bcl-2 antibody should be determined by the researcher.

Immunogen

A synthetic peptide specific to human Bcl-2 was used as the immunogen for the Bcl-2 antibody.

Storage

Store the Bcl-2 antibody at -20oC.