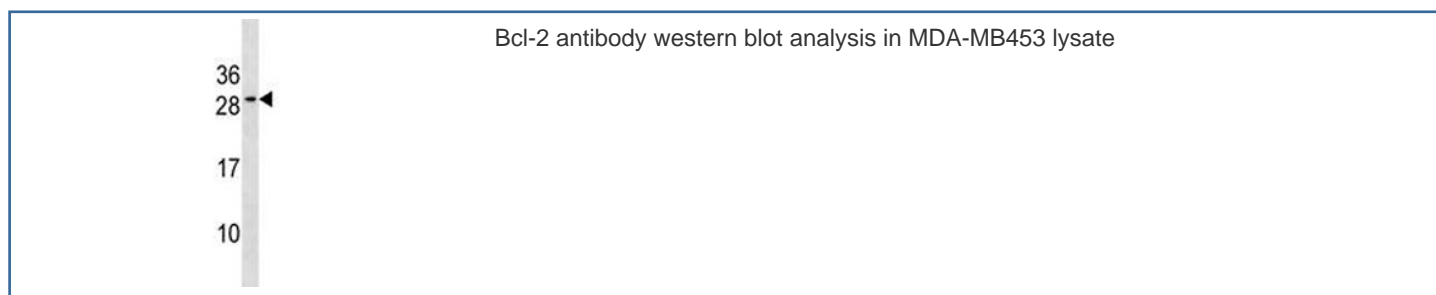


## Bcl-2 Antibody (F47422)

Catalog No.	Formulation	Size
F47422-0.4ML	In 1X PBS, pH 7.4, with 0.09% sodium azide	0.4 ml
F47422-0.08ML	In 1X PBS, pH 7.4, with 0.09% sodium azide	0.08 ml

[Bulk quote request](#)

<b>Availability</b>	1-3 business days
<b>Species Reactivity</b>	Human
<b>Predicted Reactivity</b>	Bovine, Chicken, Hamster, Mouse, Rat
<b>Format</b>	Antigen affinity purified
<b>Host</b>	Rabbit
<b>Clonality</b>	Polyclonal (rabbit origin)
<b>Isotype</b>	Rabbit Ig
<b>Purity</b>	Antigen affinity
<b>UniProt</b>	P10415
<b>Applications</b>	Western Blot : 1:1000
<b>Limitations</b>	This Bcl-2 antibody is available for research use only.



## Description

Bcl-2 suppresses apoptosis in a variety of cell systems including factor-dependent lymphohematopoietic and neural cells. Regulates cell death by controlling the mitochondrial membrane permeability. Appears to function in a feedback loop system with caspases. Inhibits caspase activity either by preventing the release of cytochrome c from the mitochondria and/or by binding to the apoptosis-activating factor (APAF-1). [UniProt]

## Application Notes

The stated application concentrations are suggested starting amounts. Titration of the Bcl-2 antibody may be required due to differences in protocols and secondary/substrate sensitivity.

## Immunogen

A portion of amino acids 144-171 from the human protein was used as the immunogen for this Bcl-2 antibody.

## Storage

Can be stored at 4°C for one month. For long term, aliquot the Bcl-2 antibody and store frozen at -20°C or colder. Avoid repeated freeze-thaw cycles.