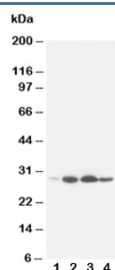


Bcl-2 Antibody [clone Bcl-2-100] (R30004)

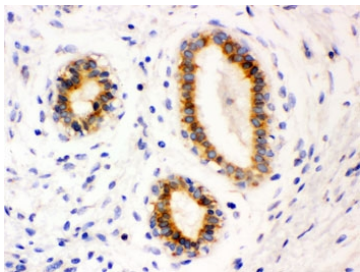
Catalog No.	Formulation	Size
R30004	0.5mg/ml with 1% BSA and 0.01% sodium azide if reconstituted with 0.2ml sterile 1X PBS	100 ug

[Bulk quote request](#)

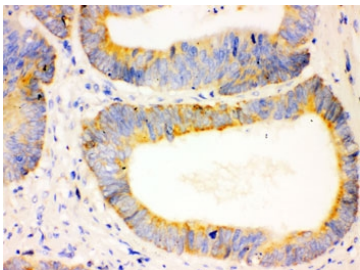
Availability	1-3 business days
Species Reactivity	Human
Format	Ascites
Host	Mouse
Clonality	Monoclonal (mouse origin)
Isotype	Mouse IgG1
Clone Name	Bcl-2-100
Purity	Ascites
Gene ID	596
Localization	Cytoplasmic
Applications	Western Blot : 1-2ug/ml IHC (FFPE) : 0.5-1ug/ml IHC (Frozen) : 0.5-1ug/ml in formalin/acetone fixed tissues Immunocytochemistry : Suitable
Limitations	This Bcl-2 antibody is available for research use only.



Western blot testing of Bcl-2 antibody and rat tissue: 1. heart; 2. spleen; 3. small intestine; 4. liver. Predicted molecular weight ~26 kDa.



IHC testing of FFPE human breast cancer tissue with Bcl-2 antibody. HIER: Boil the paraffin sections in pH 6, 10mM citrate buffer for 20 minutes and allow to cool prior to testing.



IHC testing of FFPE human intestinal cancer tissue with Bcl-2 antibody. HIER: Boil the paraffin sections in pH 6, 10mM citrate buffer for 20 minutes and allow to cool prior to testing.

Description

Immunoreactive BCL2 protein was detected in the neoplastic cells of almost all follicular lymphomas whereas no BCL2 protein was detected in follicles affected by nonneoplastic processes or in normal lymphoid tissue. Every tumor with molecular-genetic evidence of t(14;18) translocation expressed detectable levels of the protein, regardless of whether the breakpoint was located in or at a distance from the gene. Overexpression blocks the apoptotic death of a pro-B-lymphocyte cell line.

Application Notes

The stated application concentrations are suggested starting points. Titration of the Bcl-2 antibody may be required due to differences in protocols and secondary/substrate sensitivity.

Immunogen

Amino acids 41-54 of the human protein were used as the immunogen for this Bcl-2 antibody.

Storage

After reconstitution, the Bcl-2 antibody can be stored for up to one month at 4°C. For long-term, aliquot and store at -20°C. Avoid repeated freezing and thawing.