

Bcl-2 Antibody [clone 100/D5] (V2007)

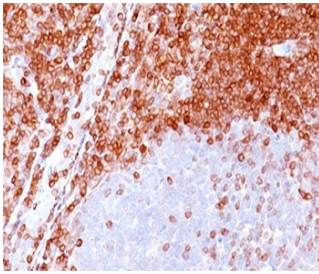
| Catalog No. | Formulation | Size |
|----------------|---|--------|
| V2007-100UG | 0.2 mg/ml in 1X PBS with 0.1 mg/ml BSA (US sourced) and 0.05% sodium azide | 100 ug |
| V2007-20UG | 0.2 mg/ml in 1X PBS with 0.1 mg/ml BSA (US sourced) and 0.05% sodium azide | 20 ug |
| V2007SAF-100UG | 1 mg/ml in 1X PBS; BSA free, sodium azide free | 100 ug |
| V2007IHC-7ML | Prediluted in 1X PBS with 0.1 mg/ml BSA (US sourced) and 0.05% sodium azide; *For IHC use only* | 7 ml |



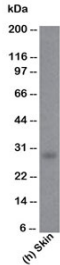
Citations (24)

[Bulk quote request](#)

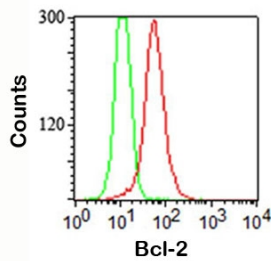
| | |
|---------------------------|---|
| Species Reactivity | Human |
| Format | Purified |
| Host | Mouse |
| Clonality | Monoclonal (mouse origin) |
| Isotype | Mouse IgG1, kappa |
| Clone Name | 100/D5 |
| Purity | Protein G affinity chromatography |
| Buffer | 1X PBS, pH 7.4 |
| Gene ID | 596 |
| Localization | Cytoplasmic, membrane |
| Applications | Flow Cytometry : 1-2ug/10 ⁶ cells Immunofluorescence : 1-2ug/ml Western Blot : 1-2ug/ml Immunohistochemistry (FFPE) : 1-2ug/ml for 30 min at RT |
| Limitations | This Bcl-2 antibody is available for research use only. |



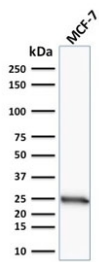
IHC testing of formalin-paraffin non-Hodgkin's lymphoma stained with Bcl-2 antibody (100/D5). Note nuclear membrane & cytoplasmic staining.



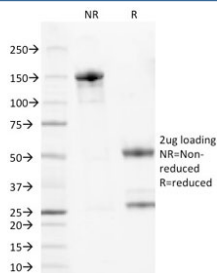
Western blot testing of human samples using Bcl-2 antibody (100/D5).



FACS staining (intracellular) of Jurkat cells using Bcl-2 antibody (red) and isotype control (green).



Western blot testing of human MCF7 cell lysate with Bcl-2 antibody (clone 100/D5).



SDS-PAGE analysis of purified, BSA-free Bcl-2 antibody (clone 100/D5) as confirmation of integrity and purity.

Description

This antibody recognizes a protein of 25-26kDa, identified as the Bcl-2 alpha oncoprotein. It shows no cross-reaction with Bcl-x or Bax. Expression of Bcl-2 alpha oncoprotein inhibits the programmed cell death (apoptosis). In most follicular lymphomas, neoplastic germinal centers express high levels of the protein, whereas the normal or hyperplastic germinal centers are negative. Consequently, Bcl-2 antibody is valuable when distinguishing between reactive and neoplastic follicular proliferation in lymph node biopsies. It may also be used in distinguishing between those follicular lymphomas that express Bcl-2 and the small number in which the neoplastic cells are negative.

Application Notes

The concentration stated for each application is a general starting point. Variations in protocols, secondaries and substrates may require the Bcl-2 antibody to be titrated up or down for optimal performance.

1. Staining of formalin-fixed tissues is enhanced by boiling tissue sections in 1mM EDTA Buffer, pH 7.5-8.5, for 10-20 min followed by cooling at RT for 20 minutes.
2. The prediluted format is supplied in a dropper bottle and is optimized for use in IHC. After epitope retrieval step (if required), drip mAb solution onto the tissue section and incubate at RT for 30 min.

Immunogen

Amino acids GAAPAPGIFSSQPG (41-54) of the human protein were used as the immunogen for this Bcl-2 antibody.

Storage

Store the Bcl-2 antibody at 2-8oC (with azide) or aliquot and store at -20oC or colder (without azide).

Alternate Names

B-cell CLL / lymphoma-2

References (1)