

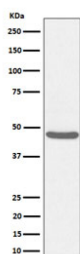
BCKDK Antibody / BCKDH kinase [clone 29B01] (RQ8869)

Catalog No.	Formulation	Size
RQ8869	Antibody in PBS with 0.02% sodium azide, 50% glycerol and 0.4-0.5mg/ml BSA	100 ul

Recombinant **RABBIT MONOCLONAL**

[Bulk quote request](#)

Availability	1-2 days
Species Reactivity	Human, Mouse, Rat
Format	Purified
Host	Rabbit
Clonality	Recombinant Rabbit Monoclonal
Isotype	Rabbit IgG
Clone Name	29B01
Purity	Affinity chromatography
UniProt	O14874
Applications	Western Blot : 1:500-1:2000
Limitations	This BCKDK antibody is available for research use only.



Western blot testing of human HeLa cell lysate with BCKDK antibody. Predicted molecular weight ~46 kDa.

Description

BCKDK functions by phosphorylating and inhibiting the branched-chain alpha-ketoacid dehydrogenase complex, which is responsible for catalyzing the initial step in BCAA catabolism. By regulating the activity of this complex, BCKDK helps maintain a balance of BCAAs in the body, which is essential for various physiological processes. Research has shown that dysregulation of BCKDK activity can lead to metabolic disorders such as maple syrup urine disease and phenylketonuria. Understanding the role of BCKDK in these conditions has paved the way for potential therapeutic interventions targeting this enzyme. Recent studies have also highlighted the potential implications of BCKDK in other

health conditions, including cancer and insulin resistance.

Application Notes

Optimal dilution of the BCKDK antibody should be determined by the researcher.

Immunogen

A synthetic peptide specific to human BCKDK protein was used as the immunogen for the BCKDK antibody.

Storage

Store the BCKDK antibody at -20oC.