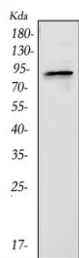


BCHE Antibody / Butyrylcholinesterase (R32187)

Catalog No.	Formulation	Size
R32187	0.5mg/ml if reconstituted with 0.2ml sterile DI water	100 ug

[Bulk quote request](#)

Availability	1-3 business days
Species Reactivity	Mouse
Format	Antigen affinity purified
Host	Rabbit
Clonality	Polyclonal (rabbit origin)
Isotype	Rabbit IgG
Purity	Antigen affinity
Buffer	Lyophilized from 1X PBS with 2.5% BSA and 0.025% sodium azide
UniProt	Q03311
Applications	Western Blot : 0.5-1ug/ml
Limitations	This BCHE antibody is available for research use only.



Western blot testing of mouse liver tissue lysate with BCHE antibody. Expected molecular weight: 66-110 kDa depending on glycosylation level.

Description

Butyrylcholinesterase (BCHE, or BuChE), also known as pseudocholinesterase or plasma cholinesterase, is a non-specific cholinesterase enzyme that hydrolyses many different choline esters. In humans, it is found primarily in the liver and is encoded by the BCHE gene. Mutant alleles at the BCHE locus are responsible for suxamethonium sensitivity. Homozygous persons sustain prolonged apnea after administration of the muscle relaxant suxamethonium in connection with surgical anesthesia. The activity of pseudocholinesterase in the serum is low and its substrate behavior is atypical. In the absence of the relaxant, the homozygote is at no known disadvantage.

Application Notes

Optimal dilution of the BCHE antibody should be determined by the researcher.

Immunogen

Amino acids 263-571 of mouse BCHE were used as the immunogen for the BCHE antibody.

Storage

After reconstitution, the BCHE antibody can be stored for up to one month at 4oC. For long-term, aliquot and store at -20oC. Avoid repeated freezing and thawing.