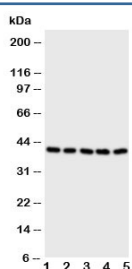


BCAT2 Antibody / PP18 / Placental protein 18 (R30575)

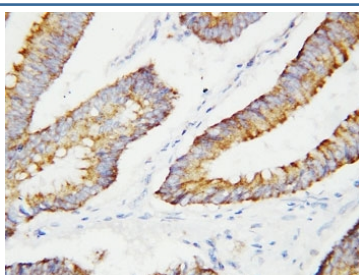
Catalog No.	Formulation	Size
R30575	0.5mg/ml if reconstituted with 0.2ml sterile DI water	100 ug

Bulk quote request

Availability	1-3 business days
Species Reactivity	Human
Format	Antigen affinity purified
Host	Rabbit
Clonality	Polyclonal (rabbit origin)
Isotype	Rabbit IgG
Purity	Antigen affinity
Buffer	Lyophilized from 1X PBS with 2.5% BSA and 0.025% sodium azide/thimerosal
UniProt	O15382
Applications	Western Blot : 0.5-1ug/ml IHC (FFPE) : 0.5-1ug/ml
Limitations	This BCAT2 antibody is available for research use only.



Western blot testing of BCAT2 antibody and Lane 1: A431; 2: SW620; 3: SMMC-7721; 4: Jurkat; 5: CEM cell lysate



IHC-P: BCAT2 antibody testing of human colon cancer tissue

Description

Branched-chain aminotransferase 2, also called Placental protein 18, is a branched chain aminotransferase found in mitochondria. The encoded protein forms a dimer that catalyzes the first step in the production of the branched chain amino acids leucine, isoleucine, and valine. Multiple transcript variants encoding different isoforms have been found for this gene. The human BCAT2 gene is mapped to 19q13.

Application Notes

The stated application concentrations are suggested starting amounts. Titration of the BCAT2 antibody may be required due to differences in protocols and secondary/substrate sensitivity.

Immunogen

An amino acid sequence from the C-terminus of human BCAT2 (KEIQYGIRAHEWMFPV) was used as the immunogen for this BCAT2 antibody.

Storage

After reconstitution, the BCAT2 antibody can be stored for up to one month at 4°C. For long-term, aliquot and store at -20°C. Avoid repeated freezing and thawing.