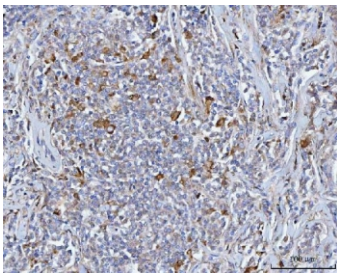


BCAT1 Antibody / Branched-chain Aminotransferase 1 (RQ7149)

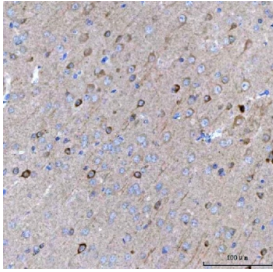
Catalog No.	Formulation	Size
RQ7149	0.5mg/ml if reconstituted with 0.2ml sterile DI water	100 ug

Bulk quote request

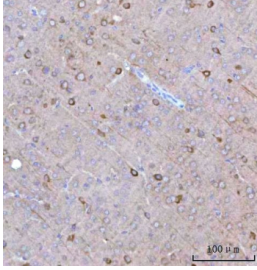
Availability	1-3 business days
Species Reactivity	Human, Mouse, Rat
Format	Antigen affinity purified
Host	Rabbit
Clonality	Polyclonal (rabbit origin)
Isotype	Rabbit IgG
Purity	Antigen affinity purified
Buffer	Lyophilized from 1X PBS with 2% Trehalose
UniProt	P54687
Localization	Cytoplasmic
Applications	Western Blot : 0.5-1ug/ml Immunohistochemistry (FFPE) : 2-5ug/ml Flow Cytometry : 1-3ug/million cells Direct ELISA : 0.1-0.5ug/ml
Limitations	This BCAT1 antibody is available for research use only.



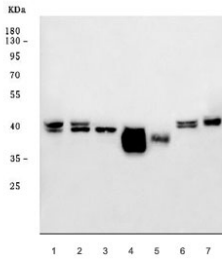
IHC staining of FFPE human lymphoma tissue with BCAT1 antibody. HIER: boil tissue sections in pH8 EDTA for 20 min and allow to cool before testing.



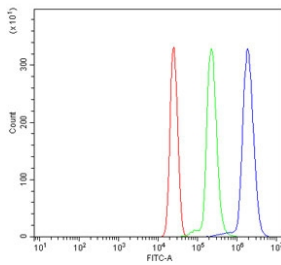
IHC staining of FFPE mouse brain tissue with BCAT1 antibody. HIER: boil tissue sections in pH8 EDTA for 20 min and allow to cool before testing.



IHC staining of FFPE rat brain tissue with BCAT1 antibody. HIER: boil tissue sections in pH8 EDTA for 20 min and allow to cool before testing.



Western blot testing of 1) human Raji, 2) human MOLT4, 3) human HeLa, 4) rat pancreas, 5) rat kidney, 6) mouse kidney and 7) mouse Neuro-2a cell lysate with BCAT1 antibody. Predicted molecular weight ~43 kDa.



Flow cytometry testing of human U937 cells with BCAT1 antibody at 1ug/million cells (blocked with goat sera); Red=cells alone, Green=isotype control, Blue= BCAT1 antibody.

Description

BCAT1, or Branched-chain Aminotransferase 1, is also known as BCT1. The BCAT1 gene is highly expressed early in embryogenesis, and during organogenesis its expression is localized to the neural tube, the somites, and the mesonephric tubules. The gene is also expressed in several MYC-based tumors. The BCAT1 gene is mapped to chromosome 12. Lack of the enzyme BCT can cause auxotroph, a kind of auxotrophic mutant in Chinese-hamster ovary cells that lacks the ability to grow if alpha-ketoisovaleric acid, alpha-ketoisocaproic acid, and alpha-keto-beta-methylvaleric acid are substituted for valine, leucine, and isoleucine in the culture medium.

Application Notes

Optimal dilution of the BCAT1 antibody should be determined by the researcher.

Immunogen

Recombinant human protein (amino acids L88-S386) was used as the immunogen for the BCAT1 antibody.

Storage

After reconstitution, the BCAT1 antibody can be stored for up to one month at 4°C. For long-term, aliquot and store at

-20oC. Avoid repeated freezing and thawing.