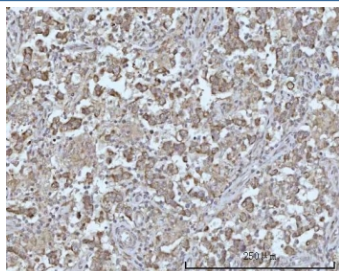


## BCAP Antibody / Basal body centriole-associated protein / ODF2L (RQ7888)

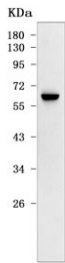
Catalog No.	Formulation	Size
RQ7888	0.5mg/ml if reconstituted with 0.2ml sterile DI water	100 ug

[Bulk quote request](#)

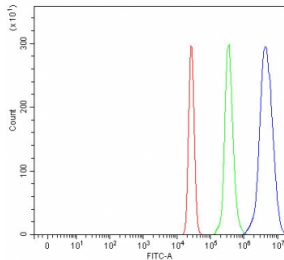
<b>Availability</b>	1-3 business days
<b>Species Reactivity</b>	Human
<b>Format</b>	Antigen affinity purified
<b>Clonality</b>	Polyclonal (rabbit origin)
<b>Isotype</b>	Rabbit IgG
<b>Purity</b>	Antigen affinity purified
<b>Buffer</b>	Lyophilized from 1X PBS with 2% Trehalose
<b>UniProt</b>	Q9ULJ1
<b>Localization</b>	Cytoplasmic
<b>Applications</b>	Western Blot : 0.5-1ug/ml Immunohistochemistry (FFPE) : 2-5ug/ml Flow Cytometry : 1-3ug/million cells Direct ELISA : 0.1-0.5ug/ml
<b>Limitations</b>	This BCAP antibody is available for research use only.



IHC staining of FFPE human testicular seminoma tissue with BCAP antibody. HIER: boil tissue sections in pH8 EDTA for 20 min and allow to cool before testing.



Western blot testing of human U-251 cell lysate with BCAP antibody. Predicted molecular weight ~60-75 kDa (multiple isoforms).



Flow cytometry testing of human U937 cells with BCAP antibody at 1ug/million cells (blocked with goat sera); Red=cells alone, Green=isotype control, Blue= BCAP antibody.

## Description

Involved in negative regulation of cilium assembly. Located in centriolar satellite and ciliary basal body.

## Application Notes

Optimal dilution of the BCAP antibody should be determined by the researcher.

## Immunogen

E. coli-derived recombinant human protein (amino acids K3-D610) was used as the immunogen for the BCAP antibody.

## Storage

After reconstitution, the BCAP antibody can be stored for up to one month at 4oC. For long-term, aliquot and store at -20oC. Avoid repeated freezing and thawing.