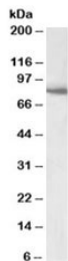


BBS7 Antibody (R34165)

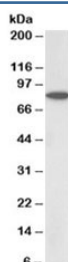
Catalog No.	Formulation	Size
R34165-100UG	0.5 mg/ml in 1X TBS, pH7.3, with 0.5% BSA (US sourced) and 0.02% sodium azide	100 ug

[Bulk quote request](#)

Availability	1-3 business days
Species Reactivity	Human, Rat
Predicted Reactivity	Cow, Dog, Mouse
Format	Antigen affinity purified
Host	Goat
Clonality	Polyclonal (goat origin)
Isotype	Goat Ig
Purity	Antigen affinity
Gene ID	55212
Applications	Western Blot : 1-3ug/ml ELISA (peptide) LOD : 1:128000
Limitations	This BBS7 antibody is available for research use only.



Western blot testing of human skeletal muscle lysate with BBS7 antibody at 1ug/ml. Predicted molecular weight: ~80kDa.



Western blot of rat skeletal muscle lysate with BBS7 antibody at 0.5ug/ml. Predicted molecular weight: ~80kDa.

Description

Additional name(s) for this target protein: Bardet-Biedl syndrome 7

Application Notes

Optimal dilution of the BBS7 antibody should be determined by the researcher.

Immunogen

Amino acids HCILEEADHLQE were used as the immunogen for this BBS7 antibody.

Storage

Aliquot and store the BBS7 antibody at -20oC.