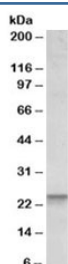


BBC3 Antibody (R33453)

Catalog No.	Formulation	Size
R33453-100UG	0.5 mg/ml in 1X TBS, pH7.3, with 0.5% BSA (US sourced) and 0.02% sodium azide	100 ug

[Bulk quote request](#)

Availability	1-3 business days
Species Reactivity	Human
Format	Antigen affinity purified
Clonality	Polyclonal (goat origin)
Isotype	Goat Ig
Purity	Antigen affinity
Gene ID	27113
Applications	Western Blot : 0.1-0.3ug/ml ELISA (peptide) LOD : 1:16000
Limitations	This BBC3 antibody is available for research use only.



Western blot testing of peripheral blood lymphocyte lysate with BBC3 antibody at 0.1ug/ml. Predicted molecular weight: ~26kDa.

Description

Additional name(s) for this target protein: BCL2 binding component 3, PUMA

Application Notes

Optimal dilution of the BBC3 antibody should be determined by the researcher.

1. This BBC3 antibody is specific for isoform 1 (also called PUMA gamma).

Immunogen

Amino acids DGGRPQRTVR were used as the immunogen for this BBC3 antibody. This sequence is specific to isoform 1/PUMA gamma.

Storage

Aliquot and store the BBC3 antibody at -20oC.