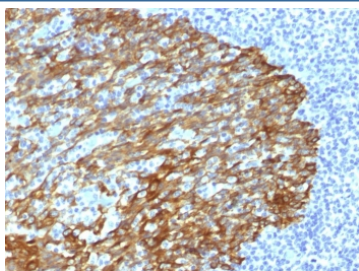


Basic Cytokeratin Antibody (HMW / Type II) [clone DE-SQ] (V8314)

Catalog No.	Formulation	Size
V8314-100UG	0.2 mg/ml in 1X PBS with 0.1 mg/ml BSA (US sourced) and 0.05% sodium azide	100 ug
V8314-20UG	0.2 mg/ml in 1X PBS with 0.1 mg/ml BSA (US sourced) and 0.05% sodium azide	20 ug
V8314SAF-100UG	1 mg/ml in 1X PBS; BSA free, sodium azide free	100 ug

Bulk quote request

Availability	1-3 business days
Species Reactivity	Human
Format	Purified
Clonality	Monoclonal (mouse origin)
Isotype	Mouse IgG1, kappa
Clone Name	DE-SQ
Purity	Protein G affinity chromatography
UniProt	Q01546
Applications	Immunofluorescence : 1-2ug/ml Immunohistochemistry (FFPE) : 1-2ug/ml
Limitations	This Basic Cytokeratin antibody is available for research use only.



IHC staining of FFPE human tonsil with Basic Cytokeratin antibody (clone DE-SQ).
HIER: boil tissue sections in pH 9 10mM Tris with 1mM EDTA for 20 min and allow to cool before testing.

Description

This antibody is specific to cytokeratin 13, 14, 15 and 16. This antibody stains squamous carcinomas and adeno-squamous carcinomas but does not stain adenocarcinoma. This antibody is useful in differential staining of squamous carcinomas from adenocarcinomas and to differentiate benign and malignant tumors of prostate glands.

Application Notes

Optimal dilution of the Cytokeratin Basic antibody should be determined by the researcher.

Immunogen

Cytoskeletal fraction prepared from human gingiva by detergent/salt extraction was used as the immunogen for this Basic Cytokeratin antibody.

Storage

Store the Basic Cytokeratin antibody at 2-8oC (with azide) or aliquot and store at -20oC or colder (without azide).