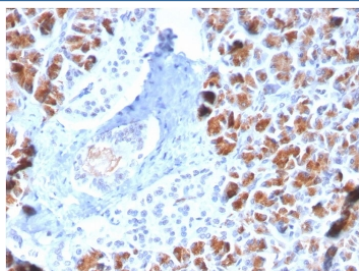


## BARX1 Antibody [clone BARX1/2759] (V8035)

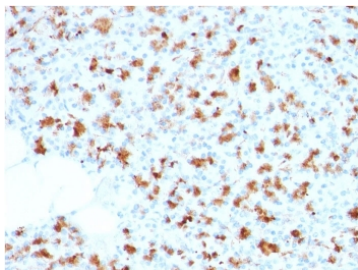
Catalog No.	Formulation	Size
V8035-100UG	0.2 mg/ml in 1X PBS with 0.1 mg/ml BSA (US sourced) and 0.05% sodium azide	100 ug
V8035-20UG	0.2 mg/ml in 1X PBS with 0.1 mg/ml BSA (US sourced) and 0.05% sodium azide	20 ug
V8035SAF-100UG	1 mg/ml in 1X PBS; BSA free, sodium azide free	100 ug

**Bulk quote request**

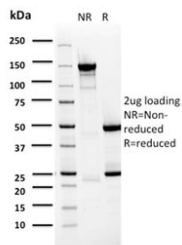
<b>Availability</b>	1-3 business days
<b>Species Reactivity</b>	Human
<b>Format</b>	Purified
<b>Clonality</b>	Monoclonal (mouse origin)
<b>Isotype</b>	Mouse IgG1, kappa
<b>Clone Name</b>	BARX1/2759
<b>Purity</b>	Protein G affinity chromatography
<b>UniProt</b>	Q9HU1
<b>Localization</b>	Nuclear
<b>Applications</b>	Immunohistochemistry (FFPE) : 1-2ug/ml
<b>Limitations</b>	This BARX1 antibody is available for research use only.



IHC staining of FFPE human pancreas with BARX1 antibody (clone BARX1/2759).  
 HIER: boil tissue sections in pH 9 10mM Tris with 1mM EDTA for 20 min and allow to cool before testing.



IHC staining of FFPE human pancreas with BARX1 antibody (clone BARX1/2759).  
HIER: boil tissue sections in pH 9 10mM Tris with 1mM EDTA for 20 min and allow to cool before testing.



SDS-PAGE analysis of purified, BSA-free BARX1 antibody (clone BARX1/2759) as confirmation of integrity and purity.

## Description

BarX1 is a member of the Bar subclass of homeobox transcription factors. Studies of the Mouse and chick homolog suggest the encoded protein may play a role in developing teeth and craniofacial mesenchyme of neural crest origin. The protein may also be associated with differentiation of stomach epithelia. Down-regulation of Barx1 promotes HCC migration, invasion and metastasis, whereas up-regulation of Barx1 inhibits HCC migration, invasion and metastasis. The loss of Barx1 expression represents a prognostic biomarker in human HCC.

## Application Notes

Optimal dilution of the BARX1 antibody should be determined by the researcher.

## Immunogen

A recombinant human partial protein (amino acids 155-254) was used as the immunogen for this BARX1 antibody.

## Storage

Store the BARX1 antibody at 2-8oC (with azide) or aliquot and store at -20oC or colder (without azide).