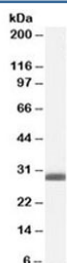


BAP31 Antibody (R35182)

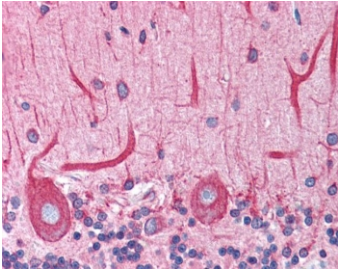
Catalog No.	Formulation	Size
R35182-100UG	0.5 mg/ml in 1X TBS, pH7.3, with 0.5% BSA (US sourced) and 0.02% sodium azide	100 ug

[Bulk quote request](#)

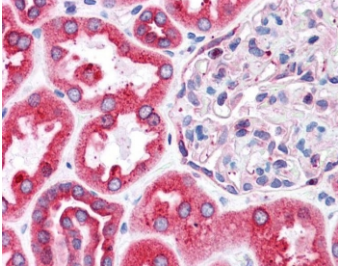
Availability	1-3 business days
Species Reactivity	Human
Predicted Reactivity	Dog, Pig, Cow
Format	Antigen affinity purified
Clonality	Polyclonal (goat origin)
Isotype	Goat Ig
Purity	Antigen affinity
Gene ID	10134
Localization	Cytoplasmic
Applications	Western Blot : 1-3ug/ml IHC (FPPE) : 3.75ug/ml ELISA (peptide) LOD : 1:32000
Limitations	This BAP31 antibody is available for research use only.



Western blot testing of human breast lysate with BAP31 antibody at 0.1ug/ml. Predicted molecular weight: ~28 kDa.



IHC testing of FFPE human cerebellum tissue with BAP31 antibody at 3.75ug/ml. Required HIER: steamed antigen retrieval with pH6 citrate buffer; AP-staining.



IHC testing of FFPE human kidney tissue with BAP31 antibody at 3.75ug/ml. Required HIER: steamed antigen retrieval with pH6 citrate buffer; AP-staining.

Description

Additional name(s) for this target protein: B-cell receptor-associated protein 31; BCAP31

Application Notes

Optimal dilution of the BAP31 antibody should be determined by the researcher.

1. This BAP31 antibody is specific for isoforms a and b.

Immunogen

Amino acids QAAVDGPMDKKEE were used as the immunogen for this BAP31 antibody.

Storage

Aliquot and store the BAP31 antibody at -20oC.