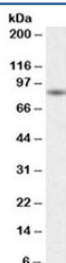


BAG3 Antibody (R36069)

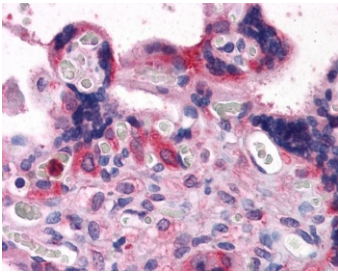
Catalog No.	Formulation	Size
R36069-100UG	0.5 mg/ml in 1X TBS, pH7.3, with 0.5% BSA (US sourced) and 0.02% sodium azide	100 ug

[Bulk quote request](#)

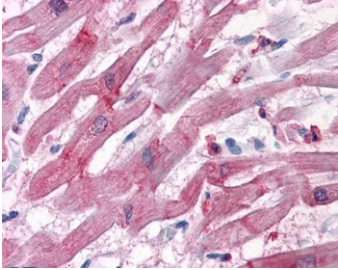
Availability	1-3 business days
Species Reactivity	Human
Format	Antigen affinity purified
Host	Goat
Clonality	Polyclonal (goat origin)
Isotype	Goat Ig
Purity	Antigen affinity
Gene ID	9531
Localization	Cytoplasmic, some nuclear
Applications	Western Blot : 0.1-1ug/ml IHC (FFPE) : 3.75ug/ml ELISA (peptide) LOD : 1:8000
Limitations	This BAG3 antibody is available for research use only.



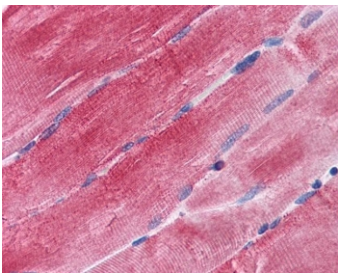
Western blot testing of human skeletal muscle lysate with BAG3 antibody at 0.1ug/ml. Predicted molecular weight ~62 kDa but can be observed at 75~80 kDa.



IHC testing of FFPE human placental tissue with BAG3 antibody at 3.75ug/ml. Required HIER: steamed antigen retrieval with pH6 citrate buffer; AP-staining.



IHC testing of FFPE human heart tissue with BAG3 antibody at 3.75ug/ml. Required HIER: steamed antigen retrieval with pH6 citrate buffer; AP-staining.



IHC testing of FFPE human skeletal muscle tissue with BAG3 antibody at 3.75ug/ml. Required HIER: steamed antigen retrieval with pH6 citrate buffer; AP-staining.

Description

Additional name(s) for this target protein: BCL2-associated athanogene 3

Application Notes

Optimal dilution of the BAG3 antibody should be determined by the researcher.

Immunogen

Amino acids SSMTDTPGNPAAP were used as the immunogen for this BAG3 antibody.

Storage

Aliquot and store the BAG3 antibody at -20oC.