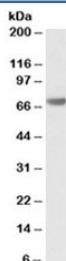


## BAG3 Antibody (R34537)

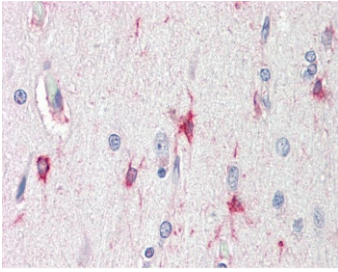
Catalog No.	Formulation	Size
R34537-100UG	0.5 mg/ml in 1X TBS, pH7.3, with 0.5% BSA (US sourced) and 0.02% sodium azide	100 ug

[Bulk quote request](#)

<b>Availability</b>	1-3 business days
<b>Species Reactivity</b>	Human
<b>Format</b>	Antigen affinity purified
<b>Host</b>	Goat
<b>Clonality</b>	Polyclonal (goat origin)
<b>Isotype</b>	Goat Ig
<b>Purity</b>	Antigen affinity
<b>Gene ID</b>	9531
<b>Localization</b>	Cytoplasmic, some nuclear
<b>Applications</b>	Western Blot : 0.1-0.3ug/ml IHC (FFPE) : 5ug/ml ELISA (peptide) LOD : 1:16000
<b>Limitations</b>	This BAG3 antibody is available for research use only.



Western blot testing of human pancreas lysate with BAG3 antibody at 0.1ug/ml.  
Predicted molecular weight ~62 kDa but can be observed at 75~80 kDa.



IHC testing of FFPE human brain (cortex) tissue with BAG3 antibody at 5ug/ml.  
Required HIER: steamed antigen retrieval with pH6 citrate buffer; AP-staining.

## Description

Additional name(s) for this target protein: BCL2-associated athanogene 3

## Application Notes

Optimal dilution of the BAG3 antibody should be determined by the researcher.

## Immunogen

Amino acids KNAGNAEDPHTE were used as the immunogen for this BAG3 antibody.

## Storage

Aliquot and store the BAG3 antibody at -20oC.